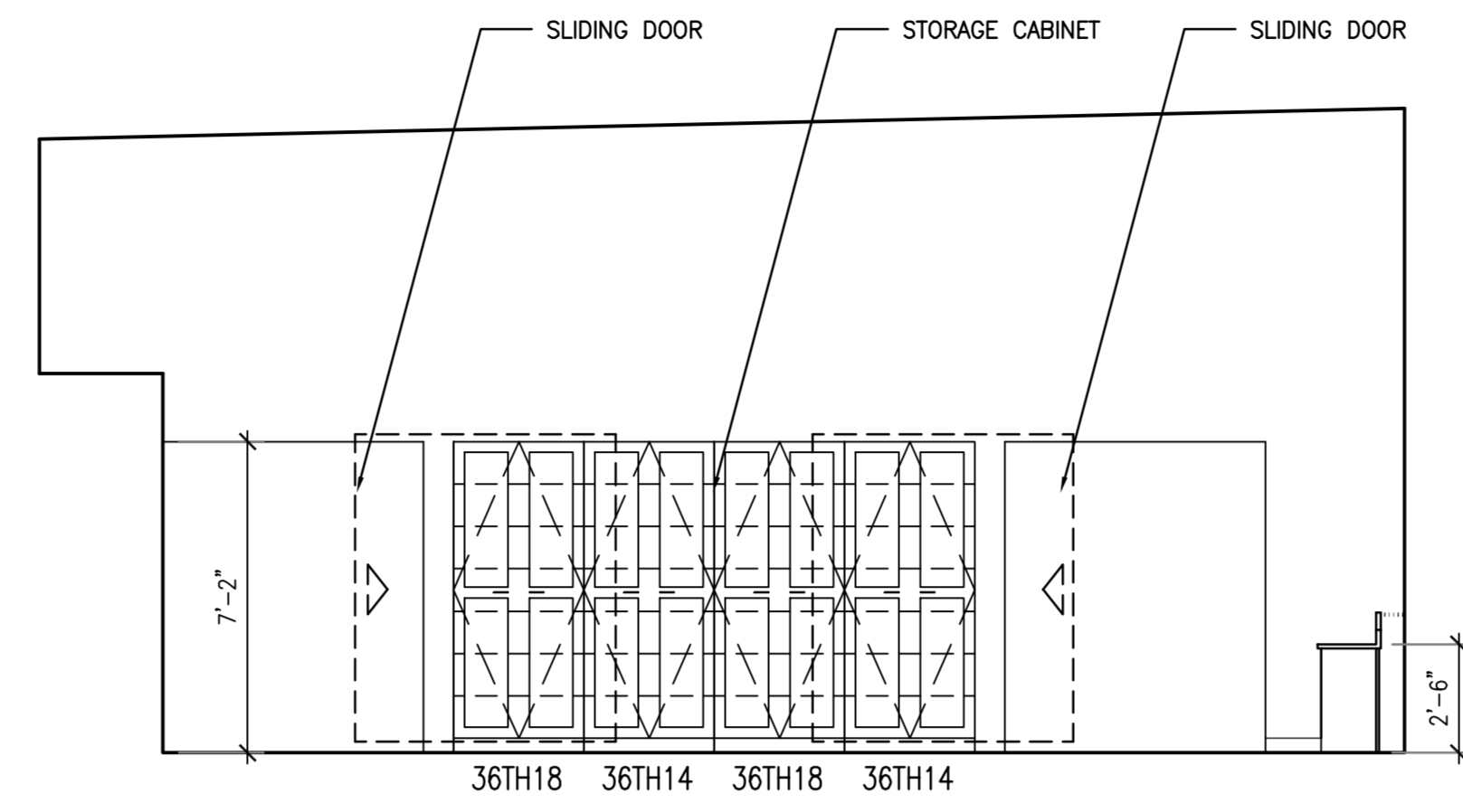
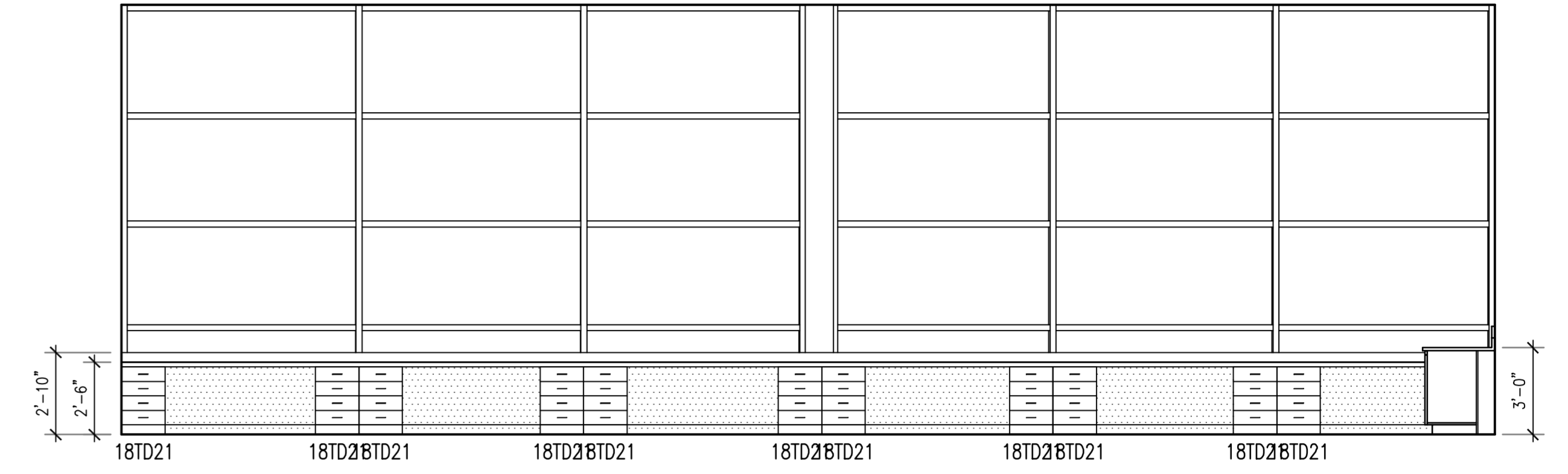


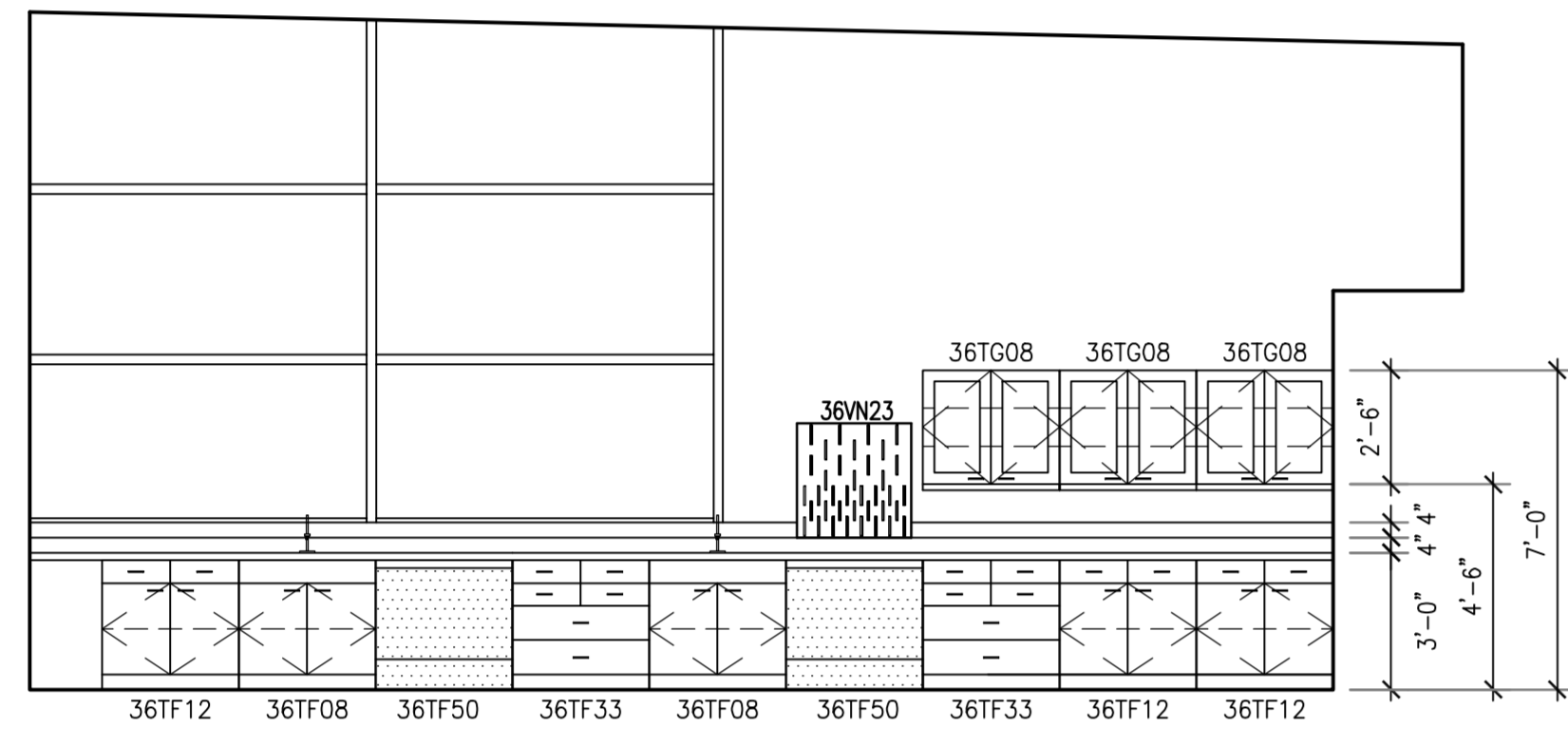
1 FIELD BIOLOGY CLASSROOM



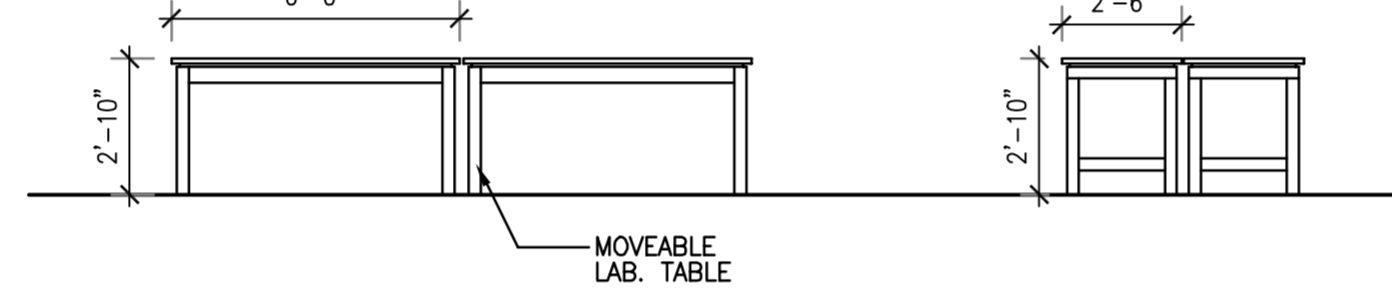
2 FIELD BIOLOGY CLASSROOM



3 FIELD BIOLOGY CLASSROOM

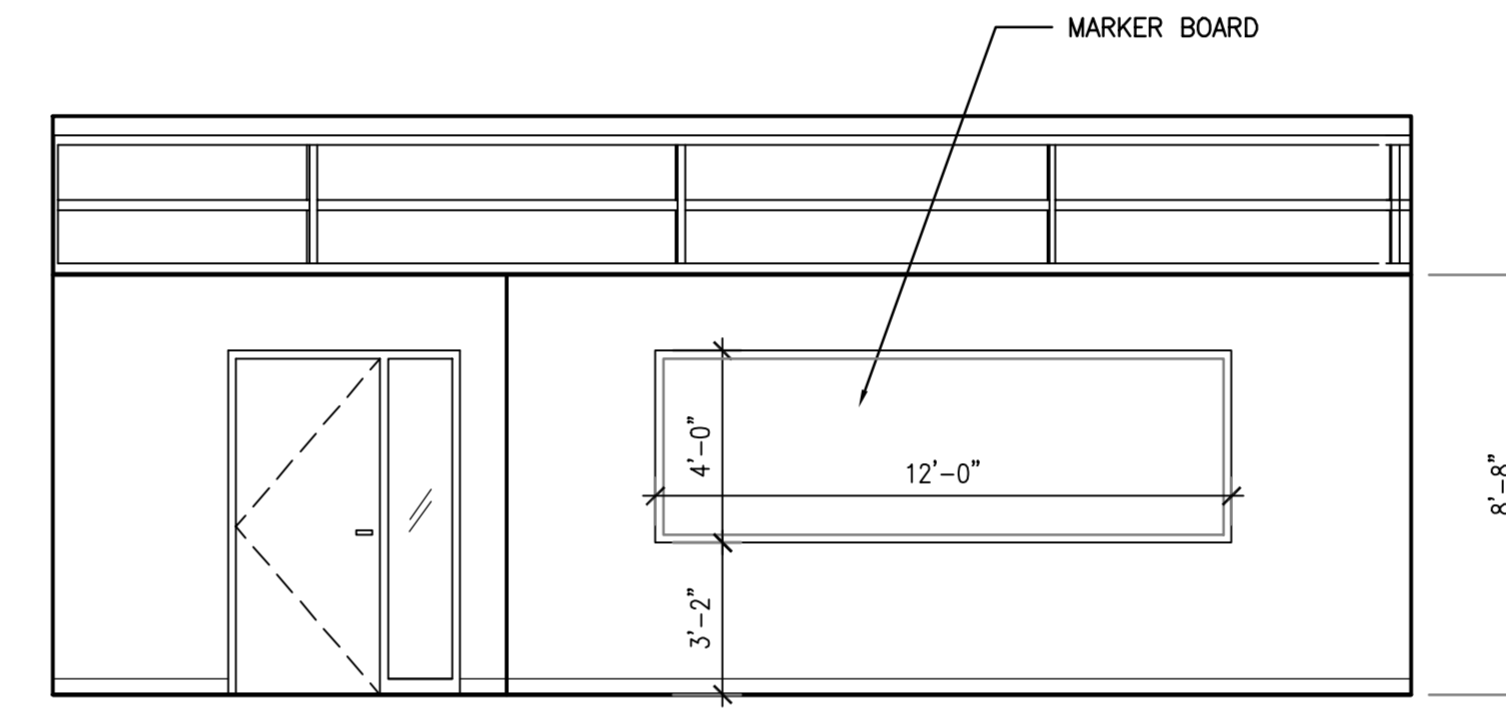


4 FIELD BIOLOGY CLASSROOM

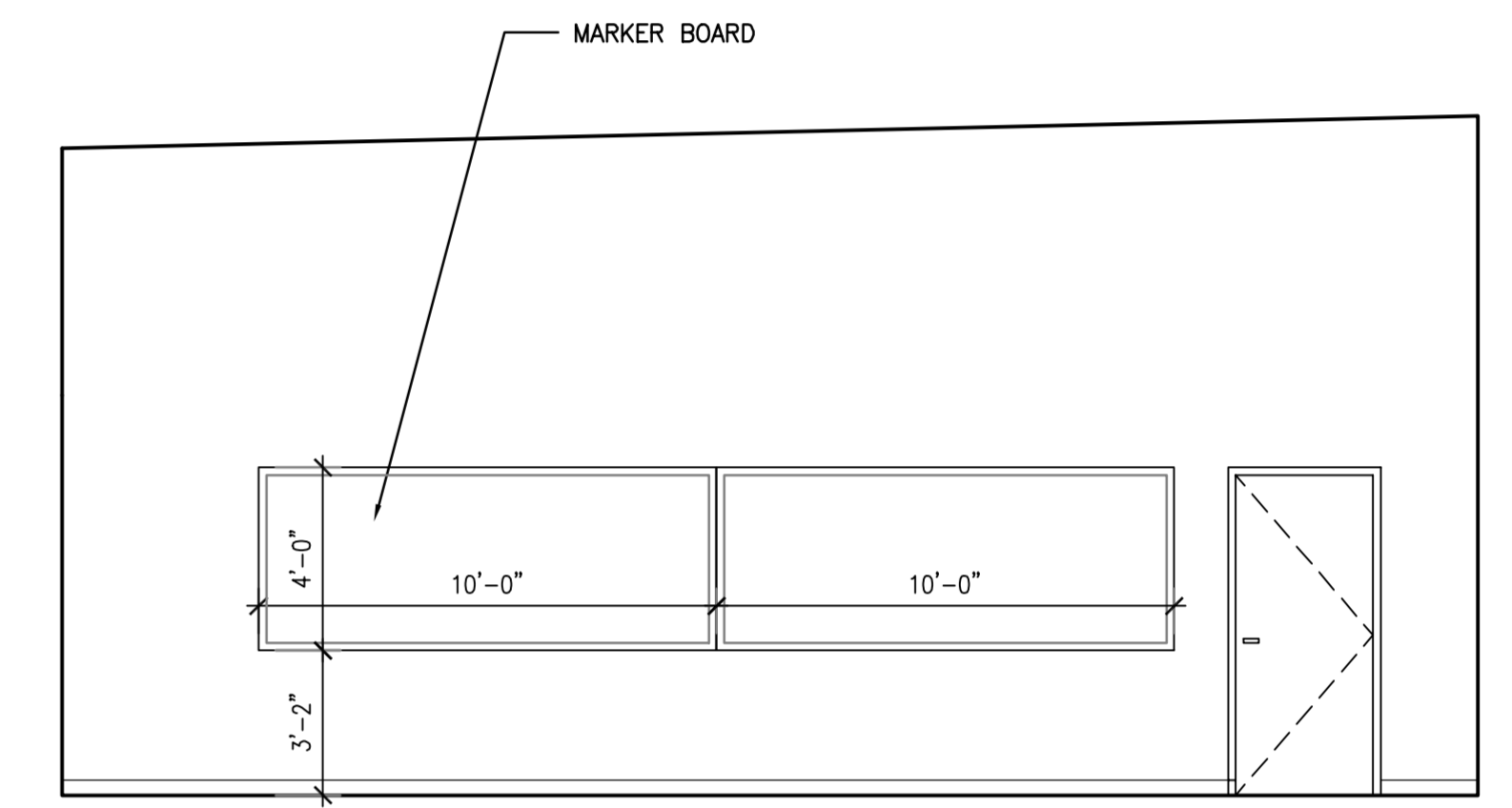


5 FIELD BIOLOGY CLASSROOM

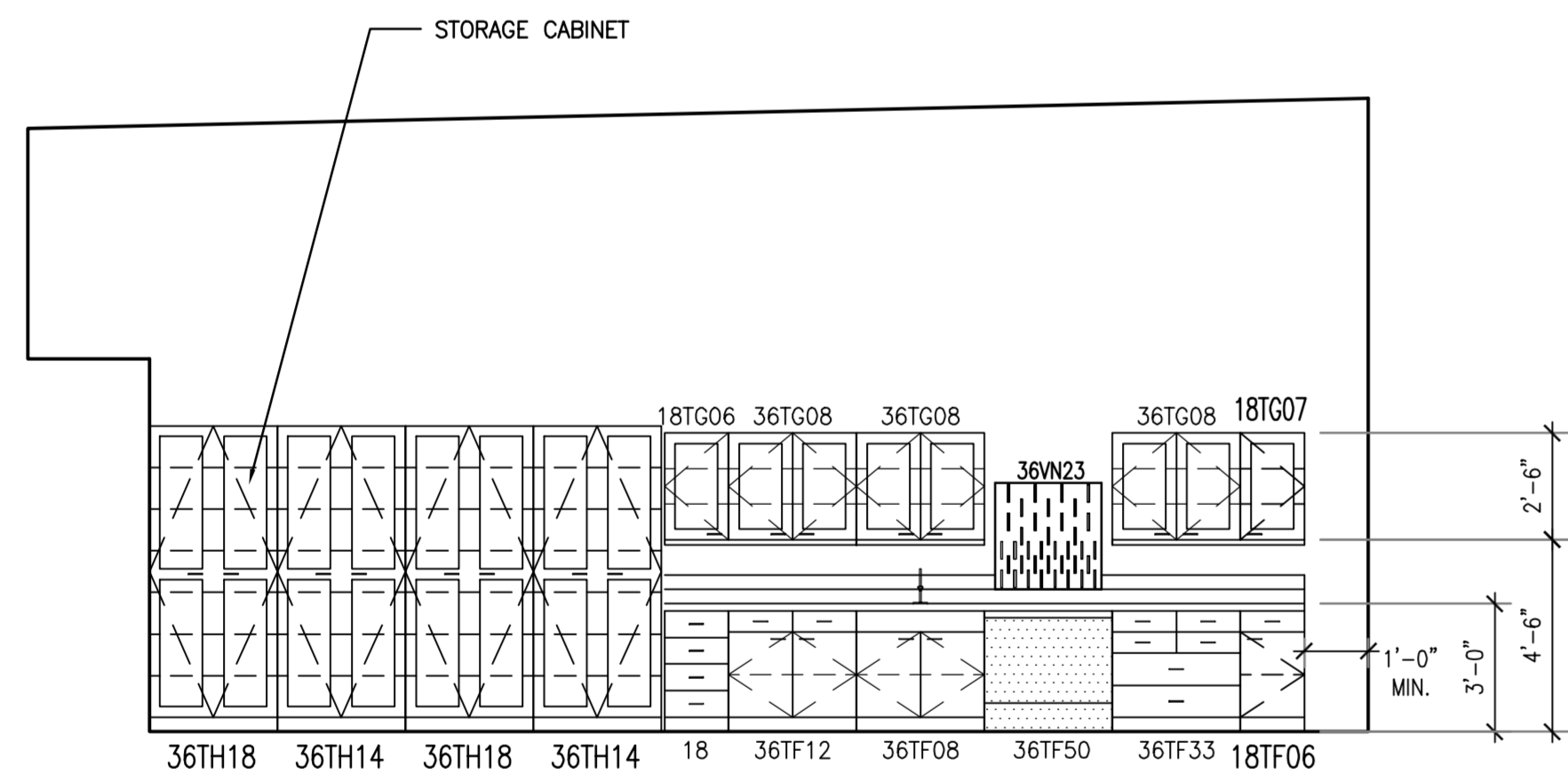
6 FIELD BIOLOGY CLASSROOM



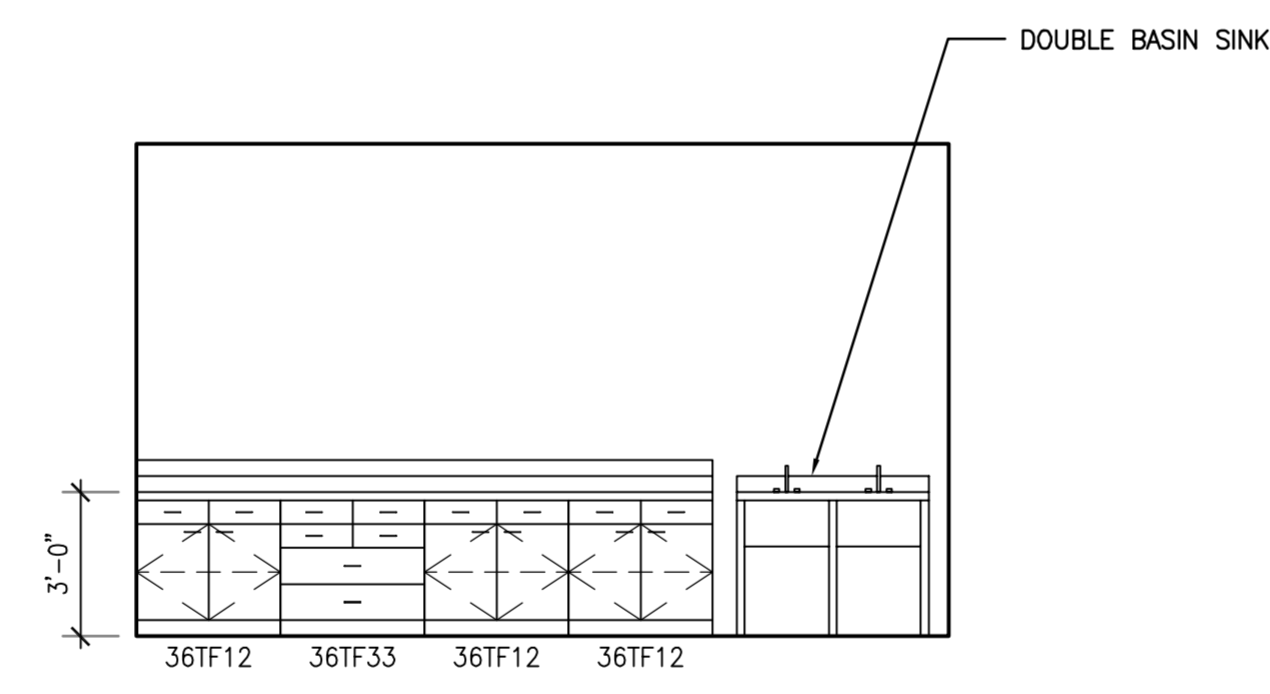
7 ENVIRONMENTAL EDU. CLASSROOM



8 ENVIRONMENTAL EDU. CLASSROOM



9 RESTORATION



10 POTTING HOUSE

Consultant	Lab Consultant	No.	Date	Revision

**Holabird & Root**  
**Architecture Engineering Interiors**  
 300 West Adams Street  
 Chicago, Illinois 60606-5174  
 Telephone 312 726 5960  
 Facsimile 312 726 1118

Holabird & Root expressly disclaims any responsibility arising from any unauthorized use of these plans, drawings and notes. Any authorization must be in writing. This drawing copy may have been reproduced at a size different than originally drawn. The Owner and Architect assume no responsibility for use of incorrect scale. Drawings are not to be scaled. Not published - All rights reserved.

Comm. No.	
Date	JANUARY 14, 2003
Drawn	
Checked	J.B.
Proj. Arch./Eng.	J.B.
Scale	AS NOTED

**GRINNELL COLLEGE**  
 CONARD ENVIRONMENTAL  
 RESEARCH AREA

ENLARGED ELEVATIONS  
 Sheet Name  
 Drawing No. **A6-2**