

SASAKI
SPORTS
Interior/Planner/Design

64 Phoenix Street, Waverham, Massachusetts 02472 USA
T 617 506 3500 F 617 524 2248 www.sasaki.com

Cesar Pelli & Associates Architects
New Haven, CT 06510

CODE REVIEW
PROGRESS 09/04/03

No.	Description	Date

Stamp: DMC ISSUE & REVISION HISTORY

Key Plan

Project Title:
**GRINNELL COLLEGE
ATHLETIC CENTER PHASE 1**

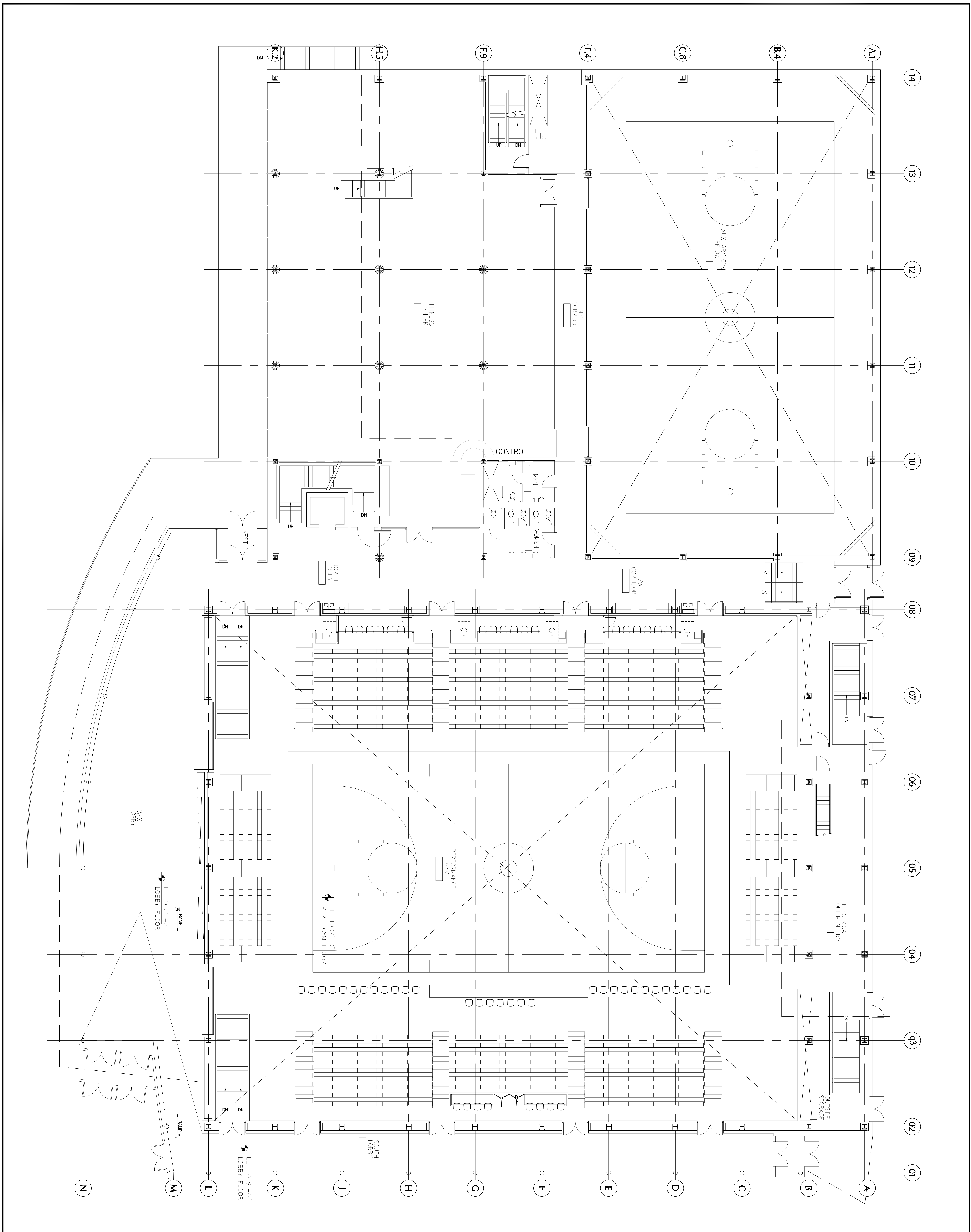
Drawing Title:
LOWER LEVEL PLAN

Project No. 24599100 Scale: 1/8" = 1'-0"

Drawn By: MSL
Checked By: LCS
Approved By:
Date:

Stamp: N

Drawing No. **A1-1**



SASAKI
SPORTS
Interdisciplinary Design
 64 Phoenix Street, Westport, Massachusetts 02870 USA
 T 617 326 3300 F 617 324 2148 www.sasaki.com

Cesar Pelli & Associates Architects
 1000 Connecticut Avenue, N.W.
 Washington, D.C. 20036

CODE REVIEW
 PROGRESS 09/04/03

No.	Description	Date

Stamp: DMC ISSUE & REVISION HISTORY

Key Plan

Project Title:
**GRINNELL COLLEGE
 ATHLETIC CENTER PHASE 1**

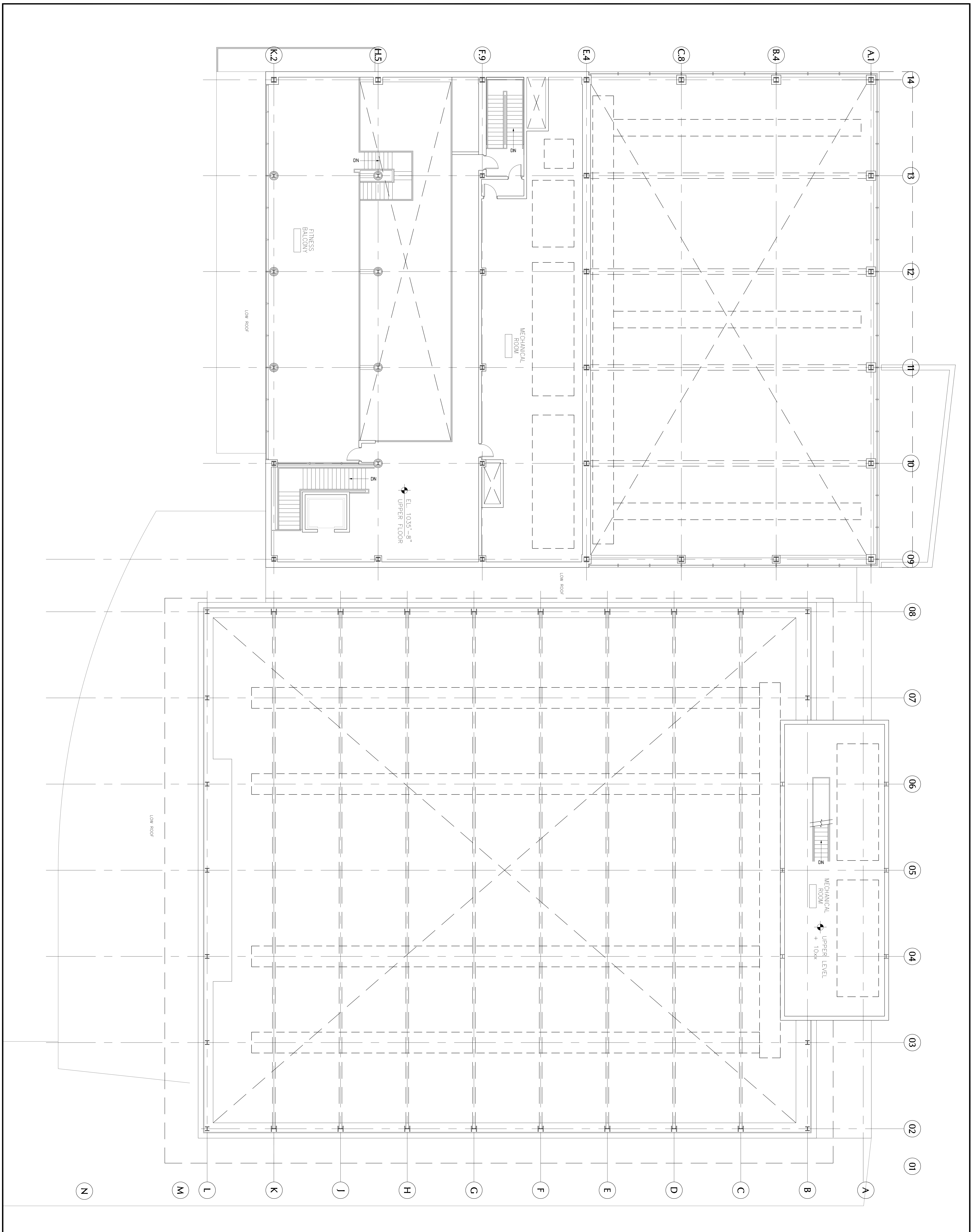
Drawing Title:
STREET LEVEL PLAN

Project Logo:
GRINNELL COLLEGE

North Arrow

Project No. **Z459900** Scale: **1/8" = 1'-0"**
 Drawn By: **MSL**
 Checked By: **CS**
 Approved By: _____
 Date: _____

Drawing No. **A1-2**



SASAKI
SPORTS
Interdisciplinary Design
 65 Beacon Street, Waltham, Massachusetts 02472 USA
 T 617 252-3500 F 617 252-2748 www.sasaki.com

Cesar Pelli & Associates Architects
 NEW HAVEN, CT 06510

CODE REVIEW
 PROGRESS 09/04/03

No.	Description	Date
	DMC ISSUE & REVISION HISTORY	

Stamp

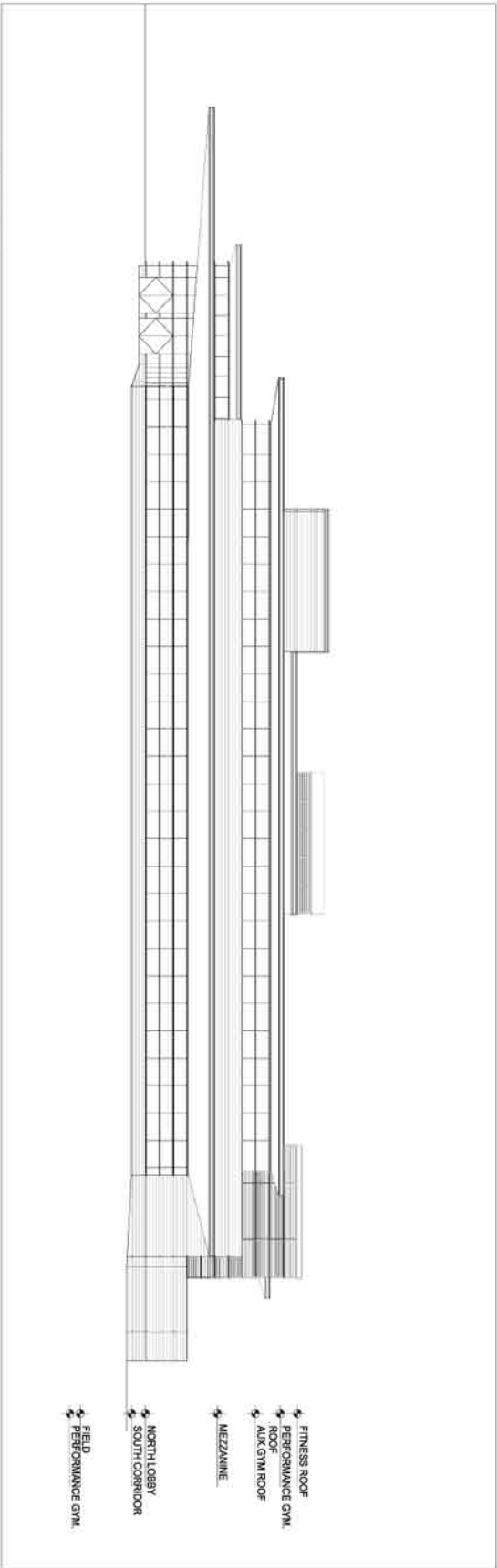
Key Plan

Project Title:
GRINNELL COLLEGE
ATHLETIC CENTER PHASE1

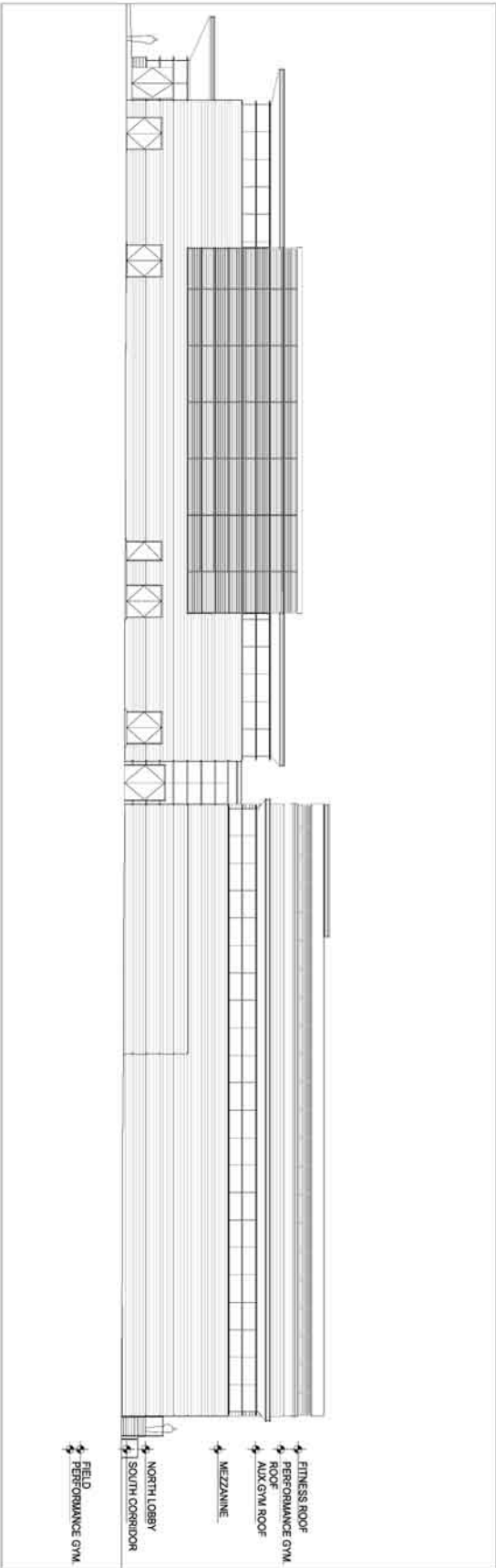
UPPER LEVEL PLAN

Project No. 2459900 Scale: 1/8" = 1'-0"
 Drawn By: MSL
 Checked By: LCS
 Approved By:
 Date:

Drawing No. **A1-3**



3 SOUTH ELEVATION



1 EAST ELEVATION

- ↔ FITNESS ROOF
- ↔ PERFORMANCE GYM
- ↔ AUX GYM ROOF
- ↔ MEZZANINE
- ↔ NORTH LOBBY
- ↔ SOUTH CORRIDOR
- ↔ FIELD PERFORMANCE GYM

- ↔ FITNESS ROOF
- ↔ PERFORMANCE GYM
- ↔ ROOF
- ↔ AUX GYM ROOF
- ↔ MEZZANINE
- ↔ NORTH LOBBY
- ↔ SOUTH CORRIDOR
- ↔ FIELD PERFORMANCE GYM

SASAKI
SPORTS
ARCHITECTURAL DESIGN
400 WEST 10TH STREET, SUITE 200, GASTON, SC 29044
803.782.1000
WWW.SASAKI.COM

Client: PAUL & MARTINEAU, ATTORNEYS
100 WEST 10TH STREET
GASTON, SC 29044

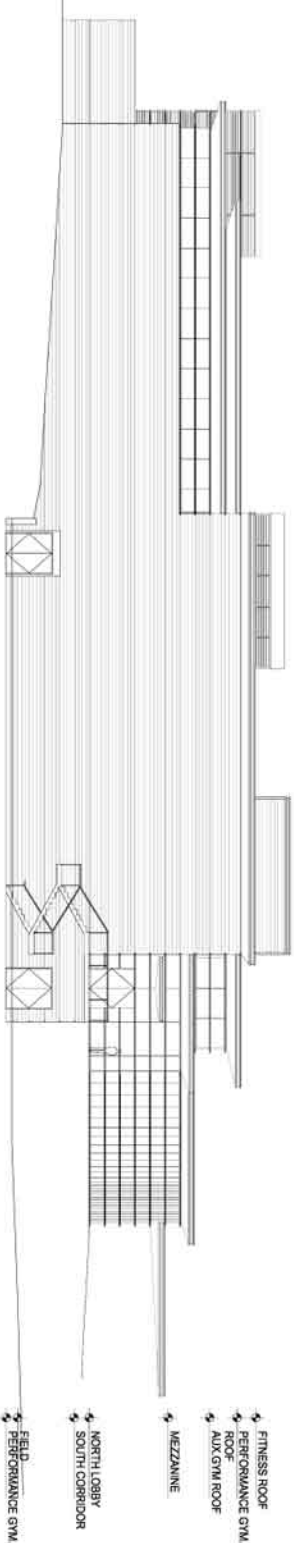
CODE REVIEW
PROGRESS 09/04/03
No. Description Date
1002 ISSUE & REVISION HISTORY

No.	Description	Date
1002	ISSUE & REVISION HISTORY	

Project Title
O'CONNELL COLLEGE
ATHLETIC CENTER PHASE I
ELEVATIONS

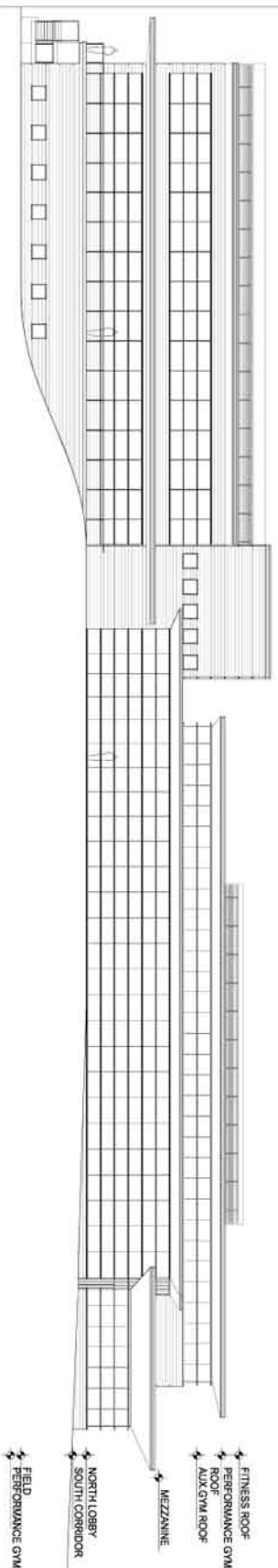
Project No. 20010001 Scale: 1/8" = 1'-0"
Drawn By: JAC
Checked By: JAC
Approved By: JAC
Date: 09/04/03

Sheet No. A2-1



3 NORTH ELEVATION

- ↕ FITNESS ROOF
- ↕ PERFORMANCE GYM
- ↕ ROOF
- ↕ AUX GYM ROOF
- ↕ MEZZANINE
- ↕ NORTH LOBBY
- ↕ SOUTH CORRIDOR
- ↕ FIELD PERFORMANCE GYM



1 WEST ELEVATION

- ↕ FITNESS ROOF
- ↕ PERFORMANCE GYM
- ↕ ROOF
- ↕ AUX GYM ROOF
- ↕ MEZZANINE
- ↕ NORTH LOBBY
- ↕ SOUTH CORRIDOR
- ↕ FIELD PERFORMANCE GYM

SASAKI
 INTERNATIONAL DESIGN
 1000 WEST 10TH AVENUE, SUITE 1000
 DENVER, COLORADO 80202
 PHONE: 303.733.1000
 FAX: 303.733.1001
 WWW.SASAKI.COM

Client: PAUL & MARJORIE ALTHOFF
 100 WEST 10TH AVENUE
 DENVER, CO 80202

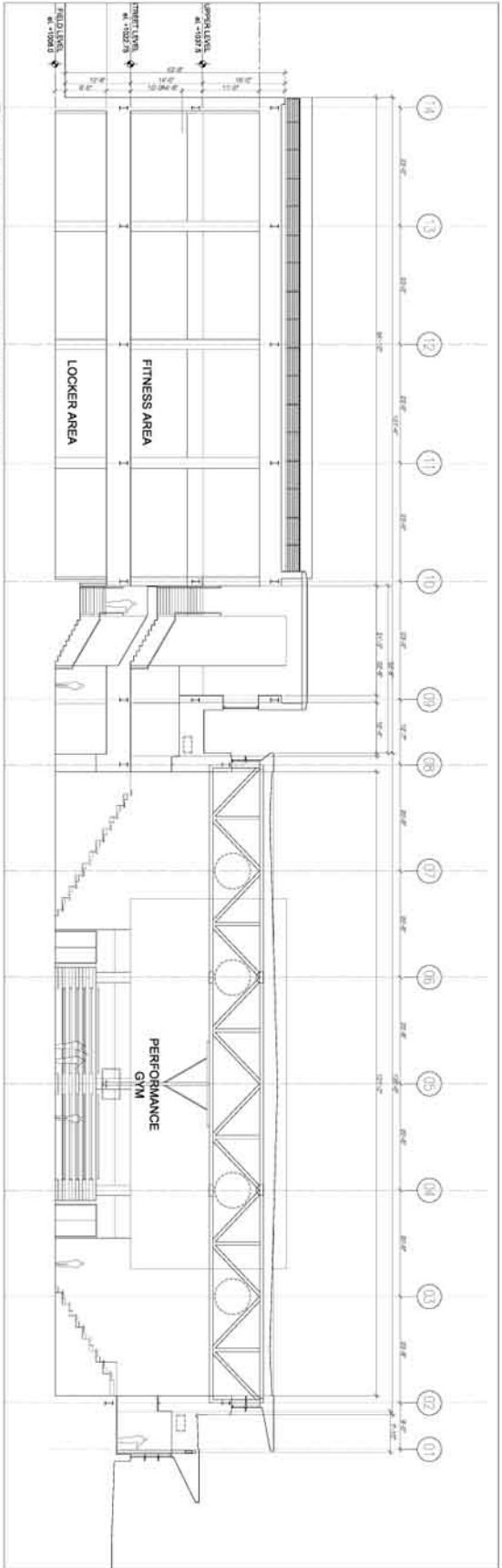
CODE REVIEW
 PROGRESS 09/04/03
 No. Description Date
 1002 ISSUE & REVISION HISTORY

Key Plan
 Scale

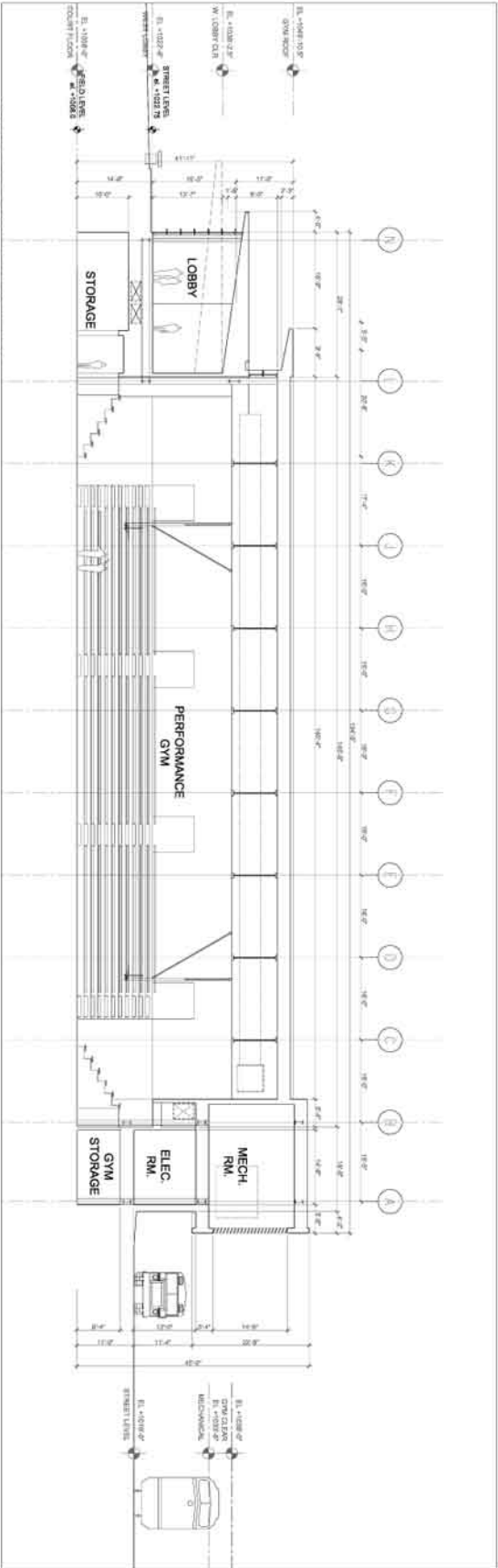


Project Title
GRANDHILL COLLEGE
ATHLETIC CENTER PHASE I
 ELEVATIONS

Project No. 2001000 Scale: 1/8" = 1'-0"
 Design By: SAKI
 Drawn By: SAKI
 Checked By: SAKI
 Approved By: SAKI
 Date: 09/04/03
 Drawing No. **A2-2**



1 NORTH SOUTH SECTION AT FITNESS AND PERFORMANCE GYM



2 EAST WEST SECTION AT PERFORMANCE GYM

SASAKI
 ARCHITECTURAL DESIGN
 1000 WEST 10TH AVENUE, SUITE 1000
 DENVER, COLORADO 80202
 PHONE: 303.733.1000
 FAX: 303.733.1001
 WWW.SASAKIARCHITECTS.COM

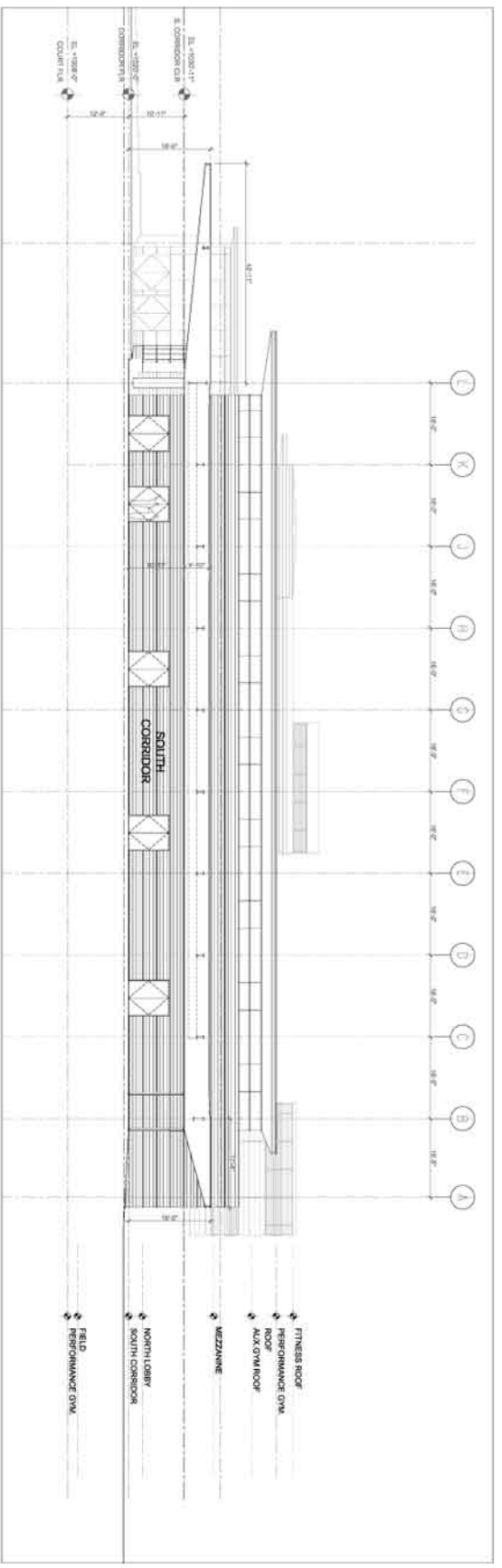
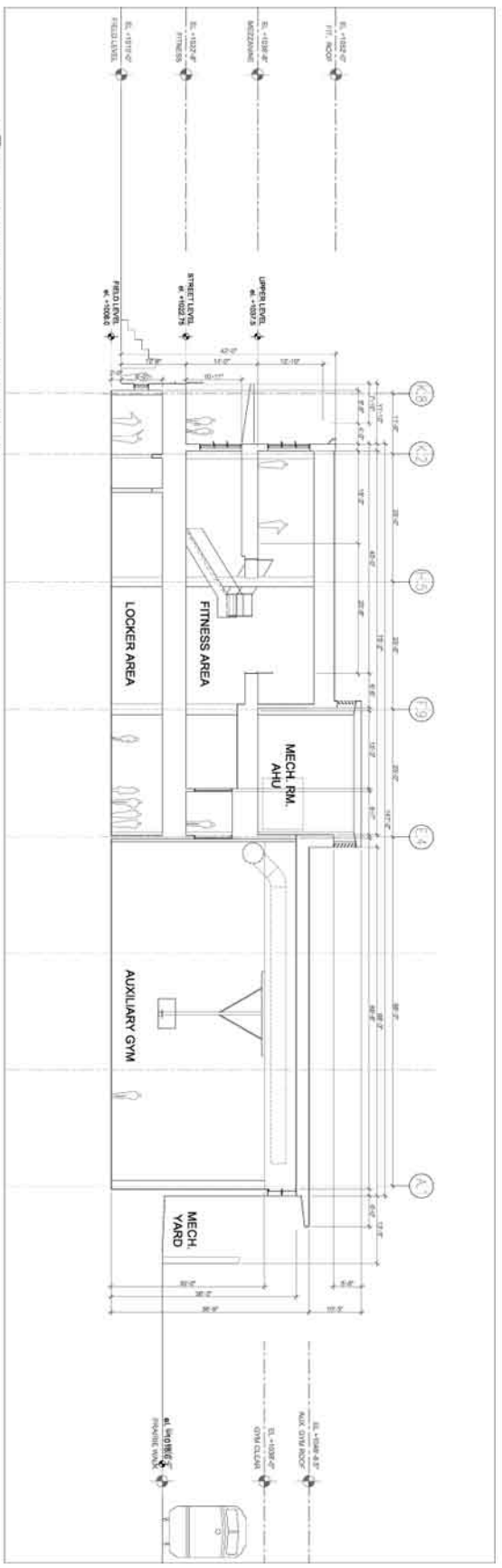
CHUCK PILLI & ASSOCIATES, ATTORNEYS
 1000 WEST 10TH AVENUE, SUITE 1000
 DENVER, COLORADO 80202

CODE REVIEW
 PROGRESS 09/04/03
 No. Description Date
 1.0000 ISSUE & REVISION HISTORY

Key Plan


Project Name
GRANDHILL COLLEGE
ATHLETIC CENTER PHASE I
 Section Title
SECTIONS

Project No. 20010001 Scale: 1/8" = 1'-0"
 Drawn By: JMK
 Checked By: JMK
 Approved By: [Signature]
 Date: [Blank]
 Drawing No. **A3-1**



CODE REVIEW
 PROGRESS 09/04/03
 No. Description Date
 1.000 ISSUE & REVISION HISTORY

Key Plan



Project Title
 OSBORN
 COLLEGE
 ATHLETIC CENTER PHASE I

Sections

Project No. 2000000 **Scale:** 1/8" = 1'-0"
Drawn By: JMC
Checked By: JMC
Approved By: JMC
Date:

Sheet No. **A3-2**