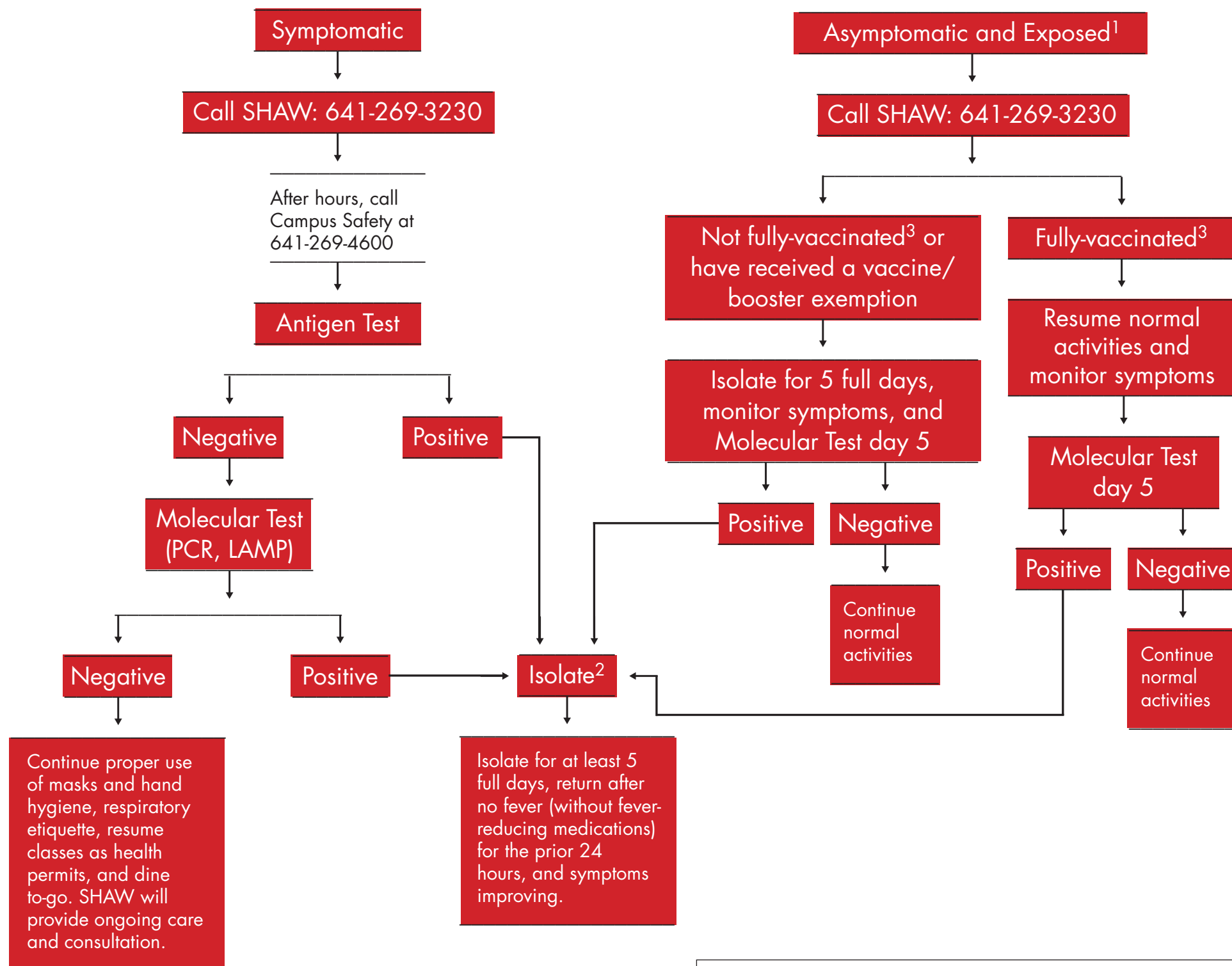


# GUIDANCE FOR STUDENTS WITH COVID-19 SYMPTOMS OR EXPOSURE<sup>1</sup> JANUARY 12, 2022 UPDATE



Printed copies may become outdated, check  
<<http://uqr.to/13rpq>> for the most current information.

<sup>1</sup> Exposure is when you have had close contact with a confirmed positive (within 6 feet for 15 minutes or more cumulative in a 24-hour period **without a mask**).

<sup>2</sup> The COVID Care Team will work with you to make isolation arrangements.

<sup>3</sup> Fully-vaccinated means that you have received the recommended doses and boosters in the recommended timeframes. See CDC Vaccine guidance at <<http://uqr.to/13rrd>>.

**Note:** With the high communicability of Omicron, it may not be possible to isolate individuals in single rooms. If the case count is high, we will room students who are positive and symptomatic together.