

October 13, 2017

# GRINNELL COLLEGE

## Humanities & Social Studies Complex



# Owner and Design Team

## ➤ Grinnell College HSSC Project Leadership Team:

- Mike Latham
- Jim Swartz
- Erik Simpson
- Keith Brouhle
- Rick Whitney
- Dave Robinson
- Larry Gleason
- Kate Walker
- Christi Baker, critical support
- Jane Taylor, critical support

## ➤ EYP Architects

- Jennifer Amster
- Eric Kern
- Eric Petersen
- Angela Wilson

## ➤ OPN Architects

- Bill Catrenich
- Pylar Eaton

# McGough Project Team

- Dustin Schwake – Sr. Project Manager
- Matt Schroeder – Project Manager II
- Josh Miltenberger – Project Manager II
- Jennifer Radniecki – Assistant Project Manager
- Amy Robinson – Project Coordinator
- Patrick Steinberger – Senior Superintendent
- Scott Musgrove – Senior Superintendent
- Patrick Woodson – Assistant Superintendent

# Subcontractors

- Advance Equipment Co.
- American Fence Co.
- American Structural Metals
- Architectural Wall Systems
- Baker Electric
- Bolander
- CGA
- Danny's Construction
- Des Moines Marble
- Floors by Beckers
- Forman Ford
- Heartland Finishes
- J&M Roofing
- KONE Elevator
- PAC-VAN
- Pella Tree Service
- Peterson Contractors, Inc.
- Premier Edge
- Pro-Bel
- S&F Underground
- Seedorff Masonry
- Soil-Tek
- Summit Fire Protection
- Superior Painting
- Swanson & Youngdale
- Waldinger Mechanical
- Walsh Door & Security
- Wynn O. Jones

# Current Highlights

- Exterior wall framing has started
- Interior wall framing has started
- Interior overhead mechanical has started
- Steel detailing continues in north pavilion
- Slab on deck work continues in north pavilion
- Basement overhead mechanical/electrical/plumbing continues

# View from commencement



# Storm sewer work – east side of south pavilion



Tunnel lid is on – looking at north pavilion



HVAC material onsite and ready for install



# Fireproofing work in progress – 1<sup>st</sup> floor south pavilion



View of north pavilion from courtyard



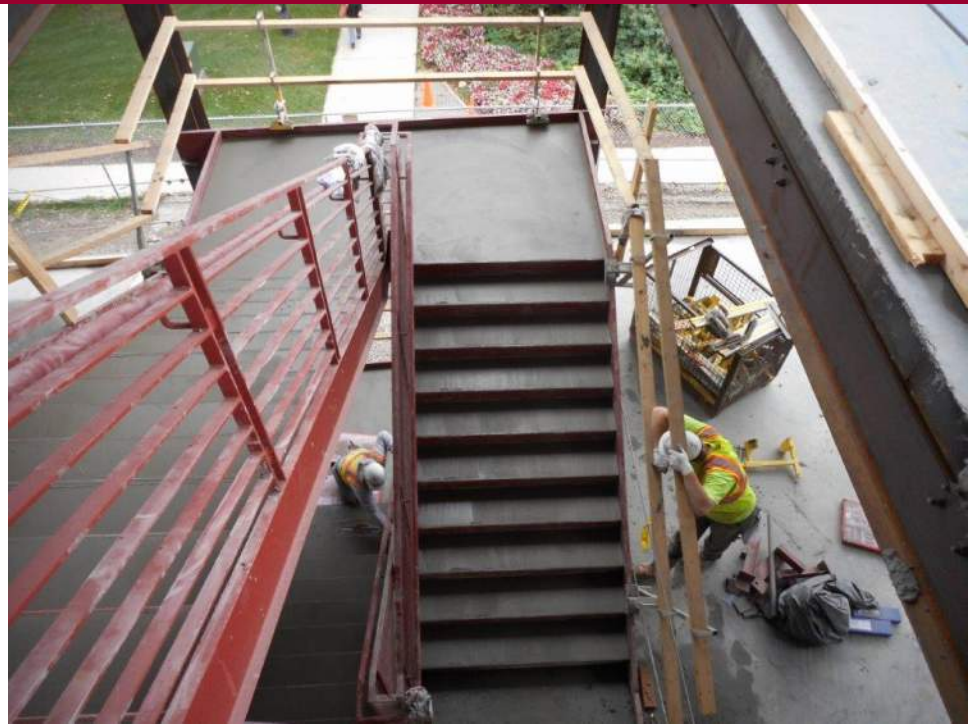
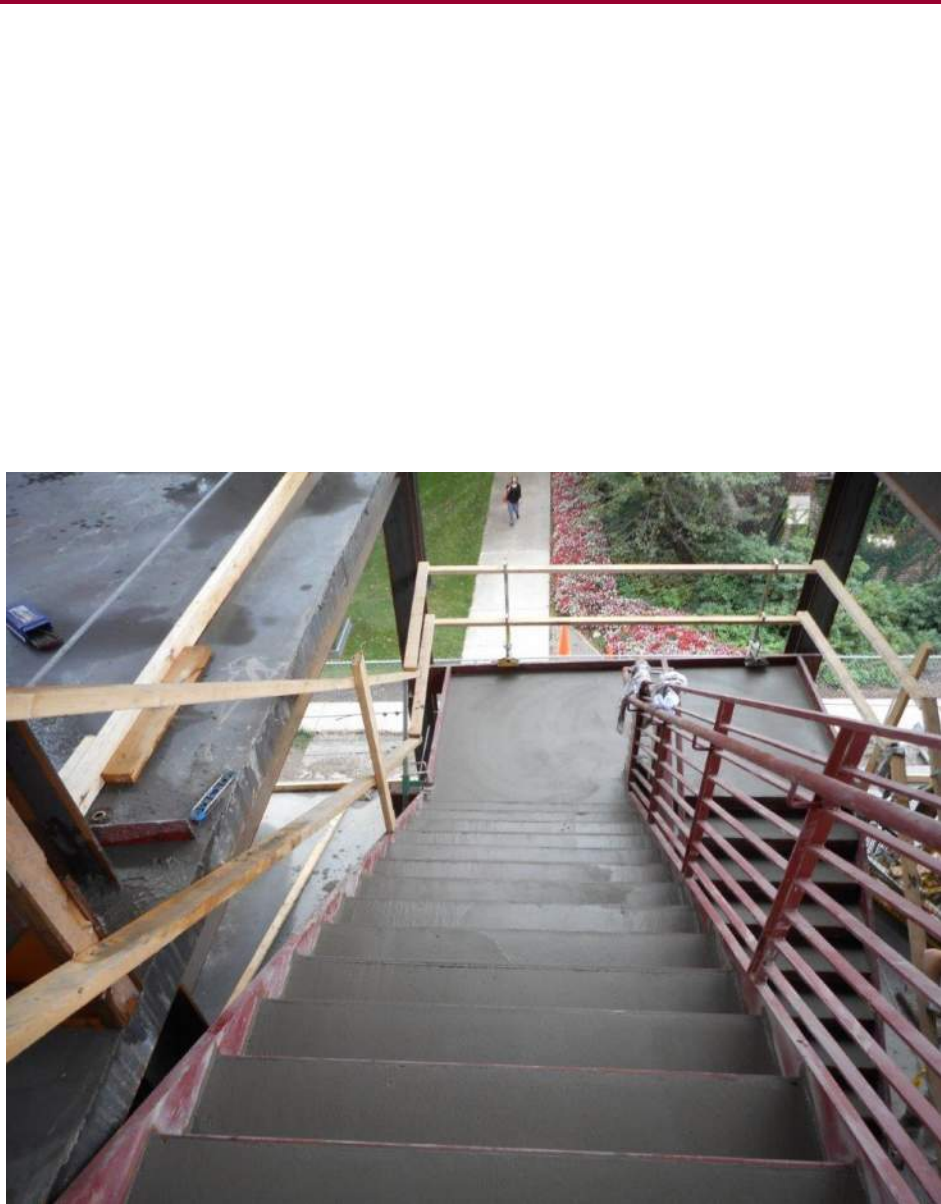
View of NW corner of north pavilion



# Exterior wall mock up in progress



# Stair 301 – concrete work installed



Looking north from tower crane



Looking south from tower crane



# Upcoming Highlights

- Steel erection to start in atrium
- Slab on deck work to continue
- Exterior envelope continues – air barrier to start