

December 15, 2017



# Owner and Design Team

## ➤ Grinnell College HSSC Project Leadership Team:

- Mike Latham
- Jim Swartz
- Erik Simpson
- Keith Brouhle
- Rick Whitney
- Dave Robinson
- Larry Gleason
- Kate Walker
- Christi Baker, critical support
- Jane Taylor, critical support

## ➤ EYP Architects

- Jennifer Amster
- Eric Kern
- Eric Petersen
- Angela Wilson

## ➤ OPN Architects

- Bill Catrenich
- Pylar Eaton

# McGough Project Team

- Dustin Schwake – Sr. Project Manager
- Matt Schroeder – Project Manager II
- Josh Miltenberger – Project Manager II
- Jennifer Radniecki – Project Manager
- Alex Maass – Assistant Project Manager
- Amy Robinson – Project Coordinator
- Chuck Carpenter – Senior Superintendent
- Scott Musgrove – Senior Superintendent
- Gus Fredrickson - Superintendent
- Patrick Woodson – Assistant Superintendent

# Subcontractors

- Advance Equipment Co.
- American Fence Co.
- American Structural Metals
- Architectural Wall Systems
- Baker Electric
- Bartley Sales
- Bolander
- CGA
- Danny's Construction
- Des Moines Marble
- Floors by Beckers
- Forman Ford
- Heartland Finishes
- J&M Roofing
- Johnson Specialty Sales
- KONE Elevator
- PAC-VAN
- Pella Tree Service
- Peterson Contractors, Inc.
- Premier Edge
- Pro-Bel
- S&F Underground
- Seedorff Masonry
- Skold Companies
- Soil-Tek
- Summit Fire Protection
- Superior Painting
- Swanson & Youngdale
- Waldinger Mechanical
- Walsh Door & Security
- Wynn O. Jones

# Current Highlights

- Steel topping off ceremony held December 13, 2017
- Slab on deck nearly complete
- Brick veneer has started in the south pavilion
- Interior wall framing and rough-in has started in south pavilion – 1<sup>st</sup> floor
- Overhead MEP work continues in all of south pavilion and north – 1<sup>st</sup> floor
- Basement equipment and piping continues
- Window installation continues in south pavilion
- Exterior wall framing is nearly complete in south pavilion and has started in the north pavilion



# View from commencement



View from NW looking SE





Exterior wall framing/sheathing at east end of north bar





# Exterior wall framing/sheathing – south elevation north bar



# View of atrium steel at ARH



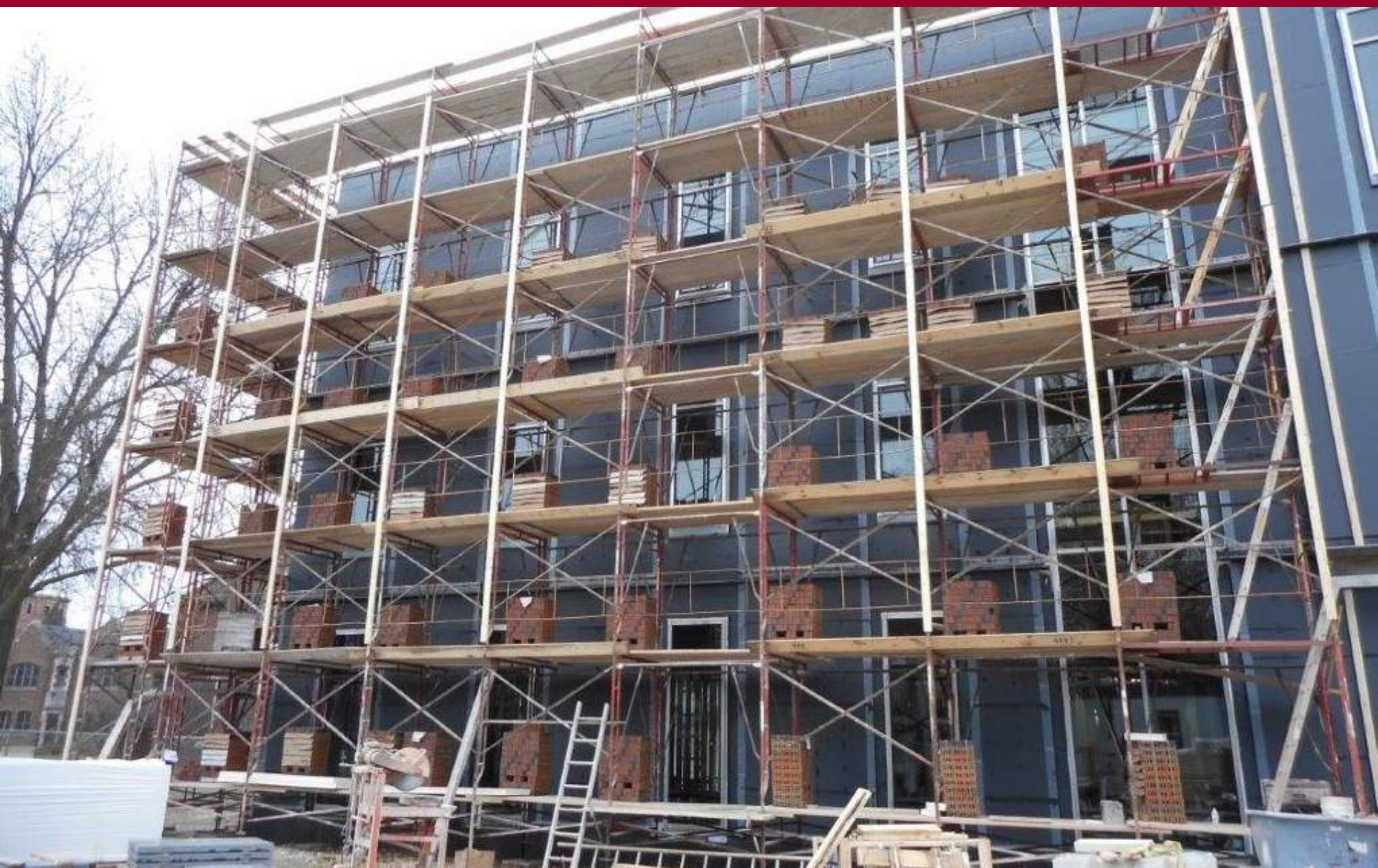


# South pavilion – exterior progress





Scaffold built and stocked for brick veneer





# Overhead MEP work in 1<sup>st</sup> floor south pavilion





# Topping off ceremony - December 13, 2017





Topping off – beam with signatures/flag/tree



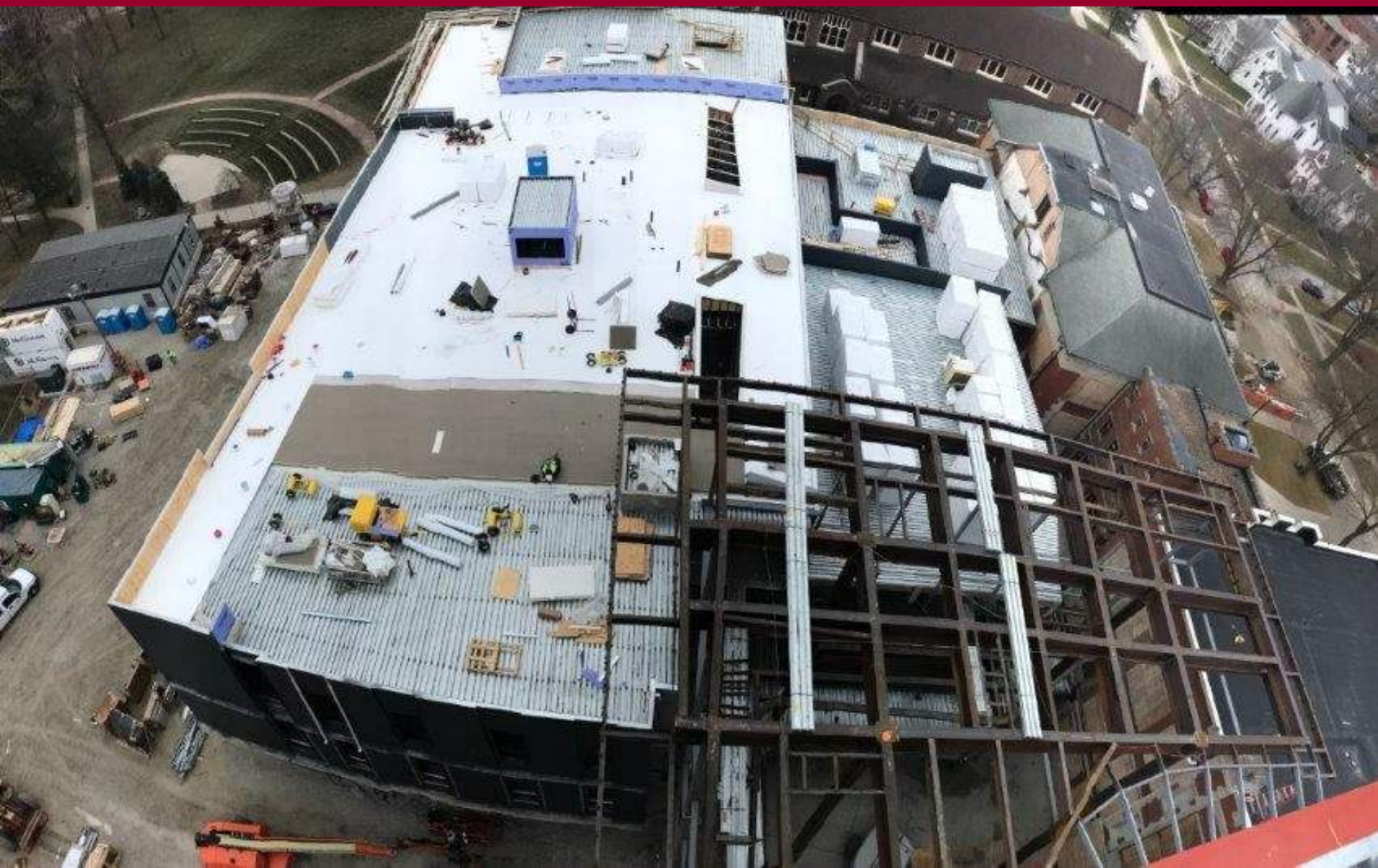


View from tower crane – ARH high steel





View from crane looking south





View from crane looking north



# Upcoming Highlights

- Slab on deck complete in atrium (sky bridges)
- Temporary heat to begin
- Roofing of low roof in south pavilion complete
- Steel erection complete (minor detailing to remain)
- Interior wall framing/rough-in continues in south pavilion
- Brick veneer/cast stone/granite installation to continue in south
- Exterior framing/sheathing to continue in north
- Basement piping/equipment to continue