

January 26, 2018

GRINNELL COLLEGE

Humanities & Social Studies Complex



Owner and Design Team

➤ Grinnell College HSSC Project Leadership Team:

- Mike Latham
- Jim Swartz
- Erik Simpson
- Keith Brouhle
- Rick Whitney
- Dave Robinson
- Larry Gleason
- Nancy Combs
- Christi Baker, critical support
- Jane Taylor, critical support

➤ EYP Architects

- Jennifer Amster
- Eric Kern
- Eric Petersen
- Angela Wilson

➤ OPN Architects

- Bill Catrenich
- Pylar Eaton

McGough Project Team

- Dustin Schwake – Sr. Project Manager
- Matt Schroeder – Project Manager II
- Josh Miltenberger – Project Manager II
- Jennifer Radniecki – Project Manager
- Alex Maass – Assistant Project Manager
- Amy Robinson – Project Coordinator
- Chuck Carpenter – Senior Superintendent
- Scott Musgrove – Senior Superintendent
- Gus Fredrickson - Superintendent
- Patrick Woodson – Assistant Superintendent

Subcontractors

- Advance Equipment Co.
- All-American Scaffold
- American Fence Co.
- American Structural Metals
- Architectural Wall Systems
- Baker Electric
- Bartley Sales
- Bolander
- CGA
- DA Bunch
- Danny's Construction
- Des Moines Marble
- Floors by Beckers
- Forman Ford
- Heartland Finishes
- J&M Roofing
- Johnson Specialty Sales
- KONE Elevator
- PAC-VAN
- Pella Tree Service
- Peterson Contractors, Inc.
- Premier Edge
- Pro-Bel
- S&F Underground
- Seedorff Masonry
- Skold Companies
- Soil-Tek
- Summit Fire Protection
- Superior Painting
- Swanson & Youngdale
- Waldinger Mechanical
- Walsh Door & Security
- Wilkie Sanderson
- Wynn O. Jones

Current Highlights

- Piping and equipment connections continue in basement
- Overhead work continues in south and north pavilion
- Roofing continues in north pavilion
- Ribbon windows being installed on north pavilion
- Brick veneer being installed on south pavilion
- Interior framing/rough-in continues on 1st and 2nd floor south pavilion
- Interior framing continues on north pavilion – 2nd floor
- Tie-in framing/sheathing at Carnegie connection
- Steel detailing continues – canopies, atrium roof and misc. metals
- Electrical gear onsite and installed

View from commencement



South elevation – steel canopy in progress



South entrance canopy



1st Floor Area C – looking south at commencement



North pavilion – north elevation



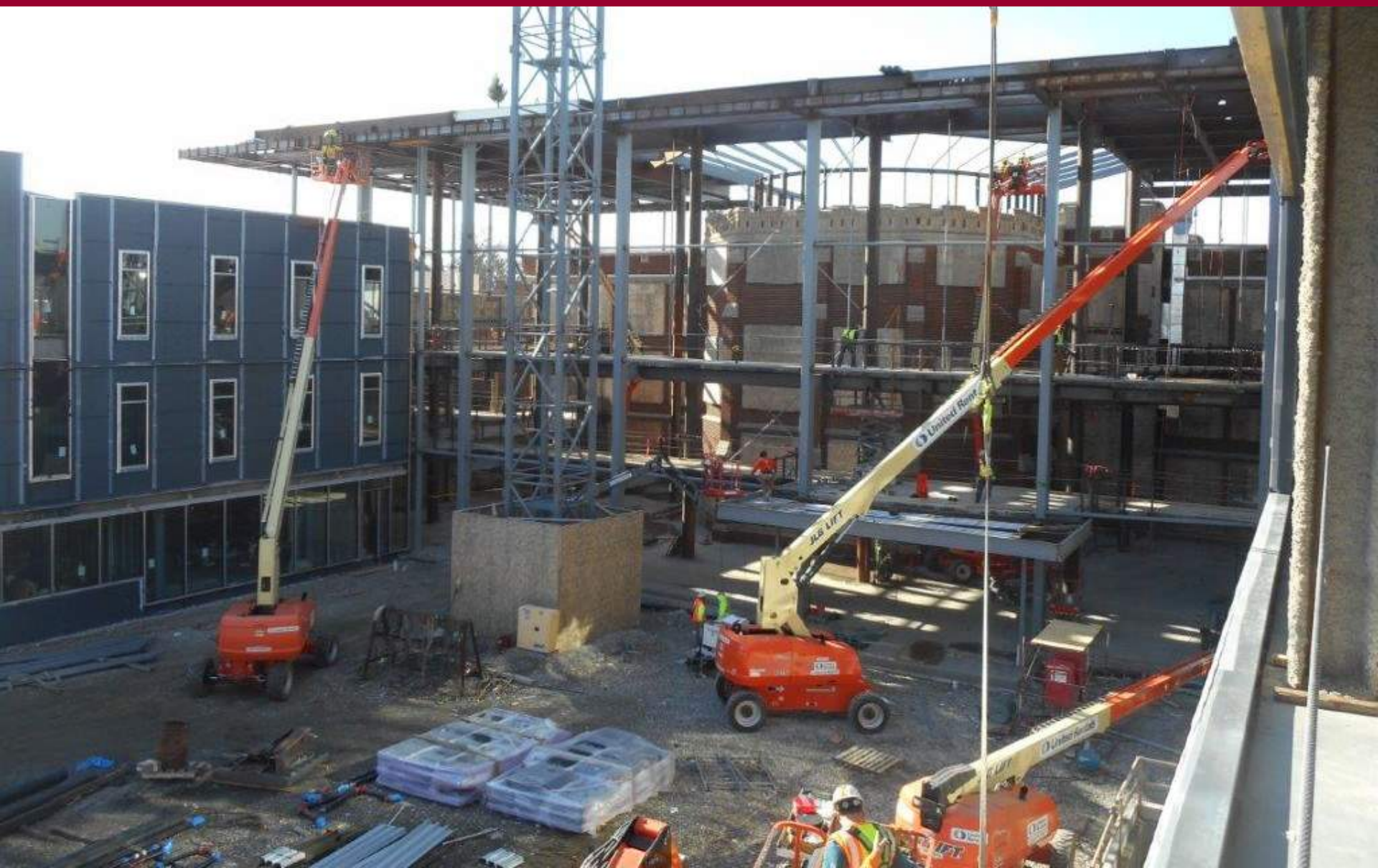
Bathroom prefabricated pipe rack



Glazers ready to swing window in place



Atrium progress



1st floor at main entrance looking north



3rd floor bridge looking south



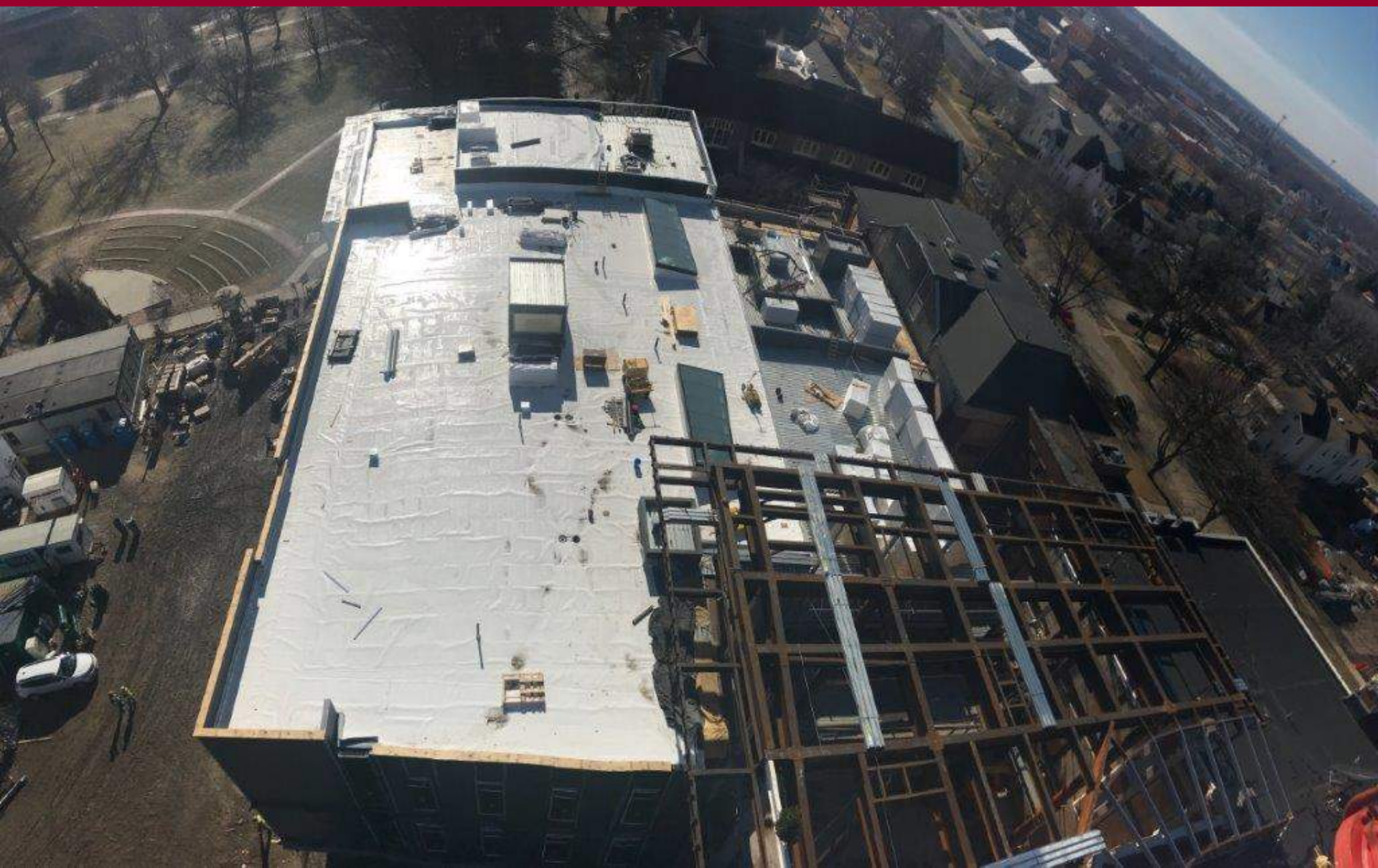
South elevation of north pavilion – ribbon windows



View from tower crane – ARH high steel



View from crane looking south



View from crane looking north



Upcoming Highlights

- 1st Floor South Pavilion – drywall to start (mid-February)
- North pavilion roofing to continue
- South pavilion roofing to be complete
- Exterior air/vapor barrier to be complete
- Brick and windows to continue
- Fireproofing on 3rd floor and west half of 2nd floor south pavilion
- Overhead piping/ductwork on 3rd floor south pavilion