

February 23, 2018

GRINNELL COLLEGE

Humanities & Social Studies Complex



Owner and Design Team

➤ Grinnell College HSSC Project Leadership Team:

- Mike Latham
- Jim Swartz
- Erik Simpson
- Keith Brouhle
- Rick Whitney
- Dave Robinson
- Larry Gleason
- Nancy Combs
- Christi Baker, critical support
- Jane Taylor, critical support

➤ EYP Architects

- Jennifer Amster
- Eric Kern
- Eric Petersen
- Angela Wilson

➤ OPN Architects

- Bill Catrenich
- Pylar Eaton

McGough Project Team

- Dustin Schwake – Sr. Project Manager
- Matt Schroeder – Project Manager II
- Josh Miltenberger – Project Manager II
- Jennifer Radniecki – Project Manager
- Alex Maass – Assistant Project Manager
- Amy Robinson – Project Coordinator
- Chuck Carpenter – Senior Superintendent
- Scott Musgrove – Senior Superintendent
- Gus Fredrickson - Superintendent
- Patrick Woodson – Assistant Superintendent

Subcontractors

- Advance Equipment Co.
- All-American Scaffold
- American Fence Co.
- American Structural Metals
- Architectural Wall Systems
- Baker Electric
- Bartley Sales
- Bolander
- CGA
- DA Bunch
- Danny's Construction
- Des Moines Marble
- Floors by Beckers
- Forman Ford
- Heartland Finishes
- J&M Roofing
- Johnson Specialty Sales
- KONE Elevator
- PAC-VAN
- Pella Tree Service
- Peterson Contractors, Inc.
- Premier Edge
- Pro-Bel
- S&F Underground
- Seedorff Masonry
- Skold Companies
- Soil-Tek
- Summit Fire Protection
- Superior Painting
- Swanson & Youngdale
- Waldinger Mechanical
- Walsh Door & Security
- Wilkie Sanderson
- Wynn O. Jones

Current Highlights

- Exterior work continues – curtainwall, brick/stone veneer. Punched windows are complete.
- Steel detailing nearly complete – architectural stairs in the atrium are being installed.
- Drywall has started – 1st floor south pavilion
- Low roof work complete in south pavilion
- Overhead work continues – 3rd floor south, 1st/2nd north
- Interior wall framing / rough-in continues

View from commencement



Ribbon window install at south end of building



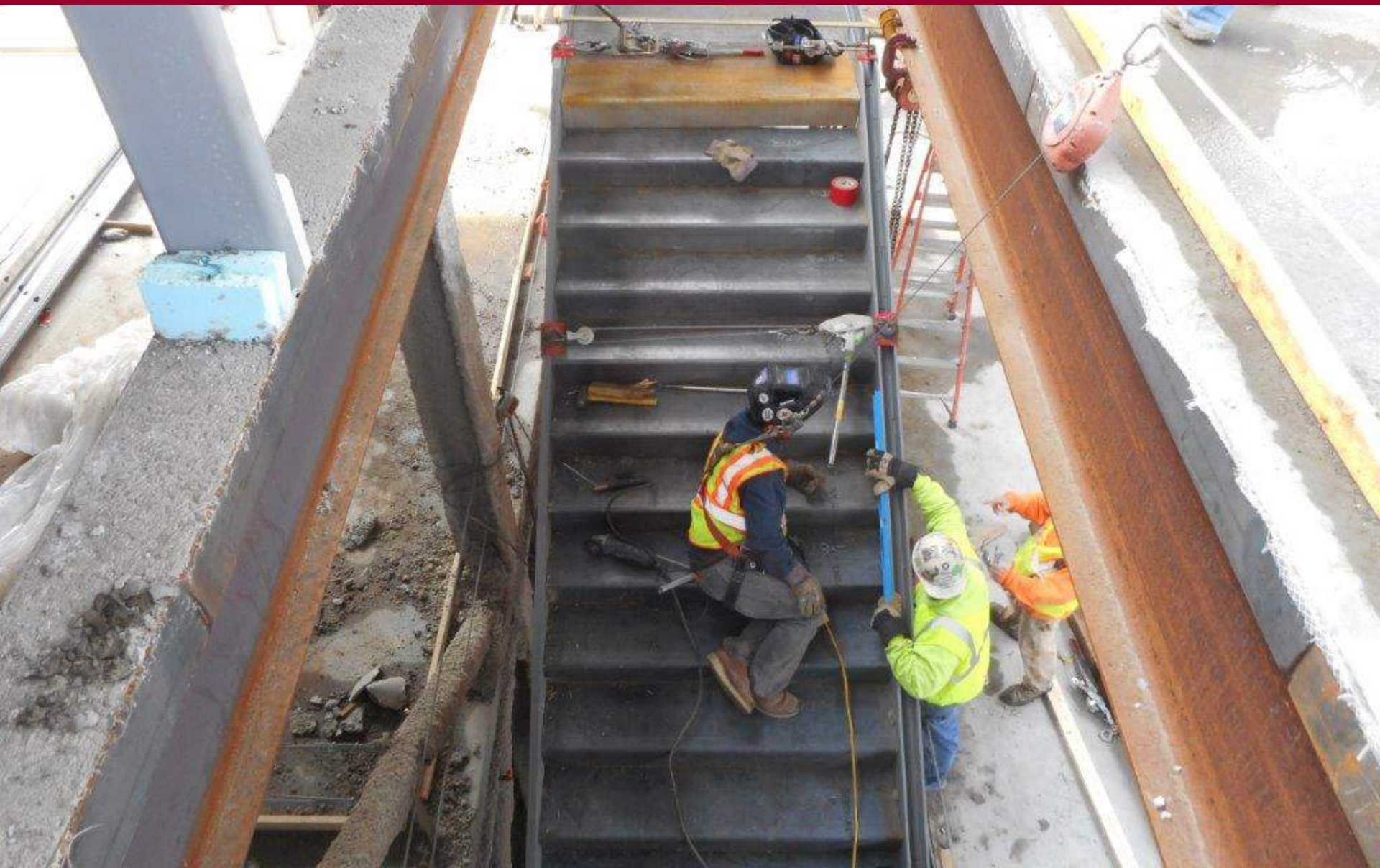
Canopy at south end of building



Punched windows installed on north end of building



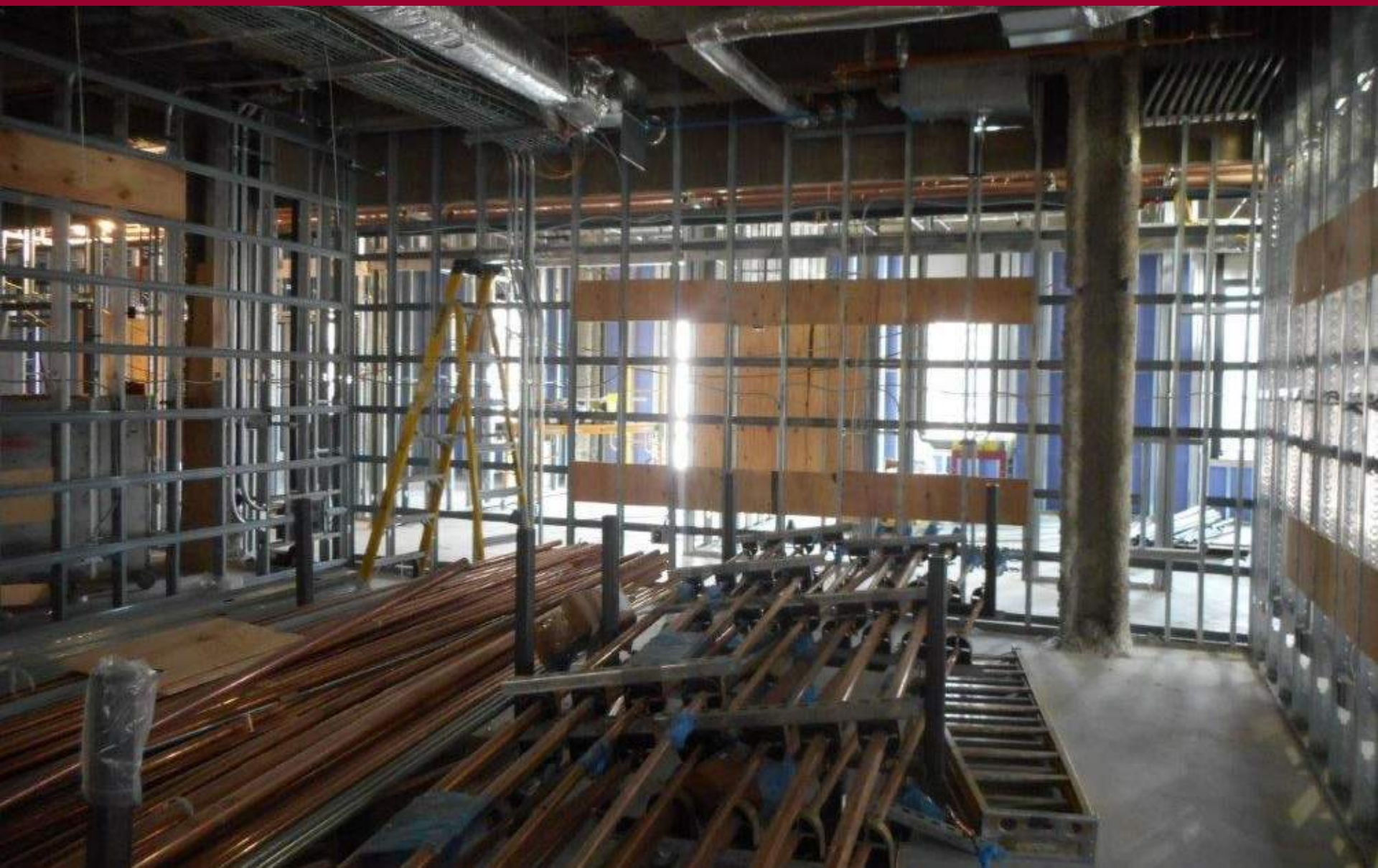
Detailing the architectural stairs in the atrium



Low roof of south pavilion (enclosed for heat)



Pre-fabricated racks for plumbing staged for install



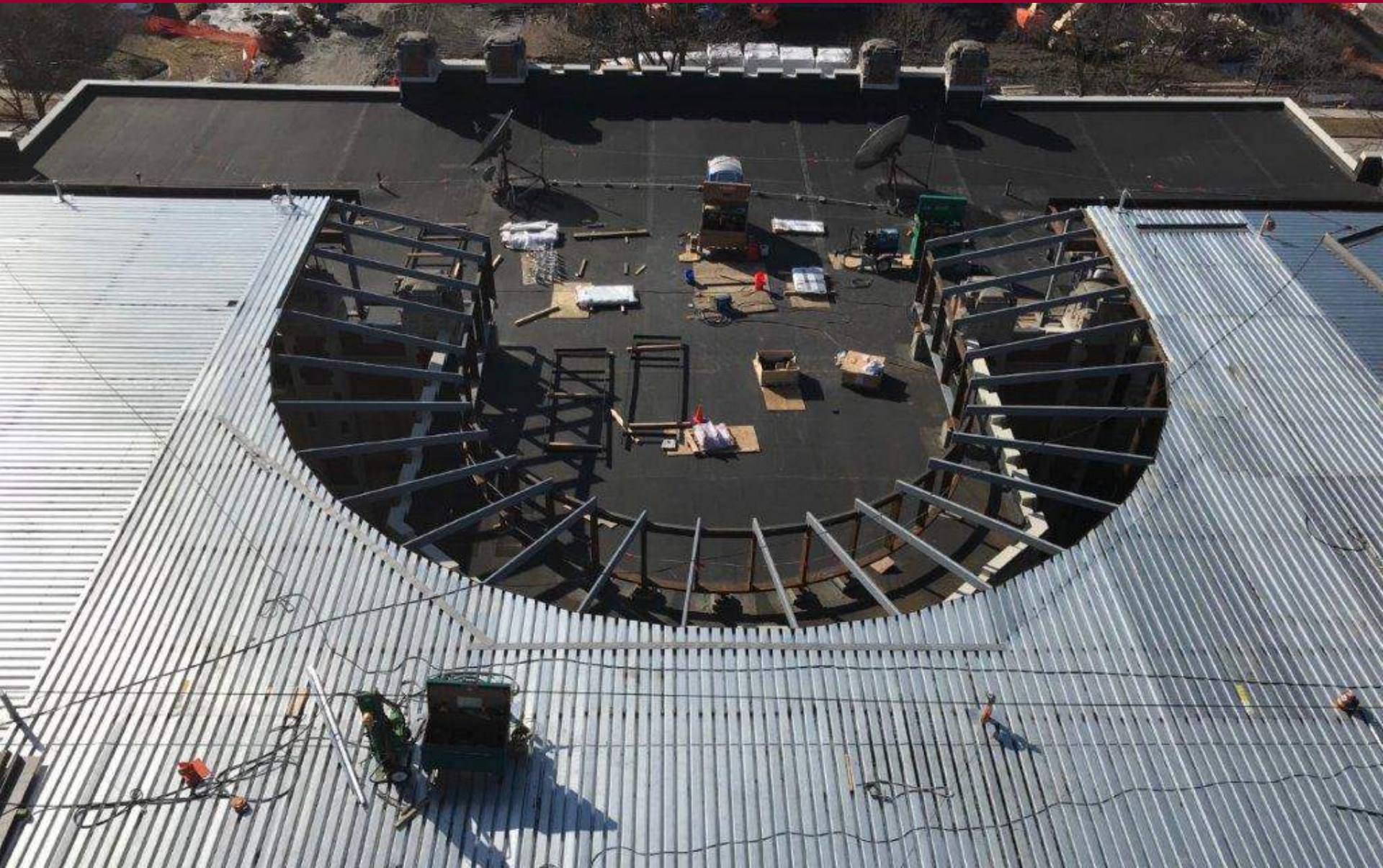
Views of south pavilion drywall



East elevation of atrium



View from tower crane – ARH high steel



View from crane looking south



View from crane looking north



Upcoming Highlights

- Drywall finish to start – 1st floor south pavilion
- Freight elevator install to start
- Fireproofing to complete (south pavilion – low roof)
- Overhead and in wall rough-in continues
- Steel detailing to complete (mid-March)
- South pavilion curtainwall to complete