

March 9, 2018



GRINNELL COLLEGE

Admission and Financial Aid Building

Owner and Design Team

➤ Grinnell College AFA Project Leadership Team:

- Rick Whitney
- Joe Bagnoli
- Dave Dale
- Jim Powers
- Brad Lindberg
- Christi Baker, critical support
- Jane Taylor, critical support

➤ ASG Architects

- Ann Powell
- Todd McEntire

➤ Structural Engineers

- Rachel Tyler

McGough Project Team

- Dustin Schwake – Sr. Project Manager
- Matt Schroeder – Project Manager II
- Alex Maass – Assistant Project Manager
- Amy Robinson – Project Coordinator
- Scott Musgrove – Senior Superintendent
- Patrick Woodson – Assistant Superintendent

Subcontractors

- Architectural Arts
- Baker Electric
- Clark Glass
- DB Acoustics
- Heartland Finishes
- Heartland Window Treatments
- KONE
- Midland Concrete Products
- Ralph N. Smith
- Sedorff Masonry
- Soil-Tek
- Suburban Lumber
- Swanson & Youngdale
- T&K Roofing
- TSF Structures
- US Erectors
- Viking Automatic Sprinkler
- Waldinger
- Walsh Door
- Wes Jarnagin

Current Highlights

- Overhead MEP 1st floor grids 1-9 nearing completion
- Roof decking north wing grids 13-19
- Structural steel for Waiting Room 104 nearing completion
- Door frames setting 1st
- Interior wall framing completed grids 3-9
- Wall rough ins 3-9 nearing completion
- Monumental stair material onsite
- Vapor barrier 60% complete
- Roof insulation & plywood completed grids 1-3
- Exterior wall framing 85% complete
- Windows onsite
- Roof blocking 70% complete

Southeast looking northwest – air barrier applied



Looking at eastside offices



Looking northwest at Presentation Room 103



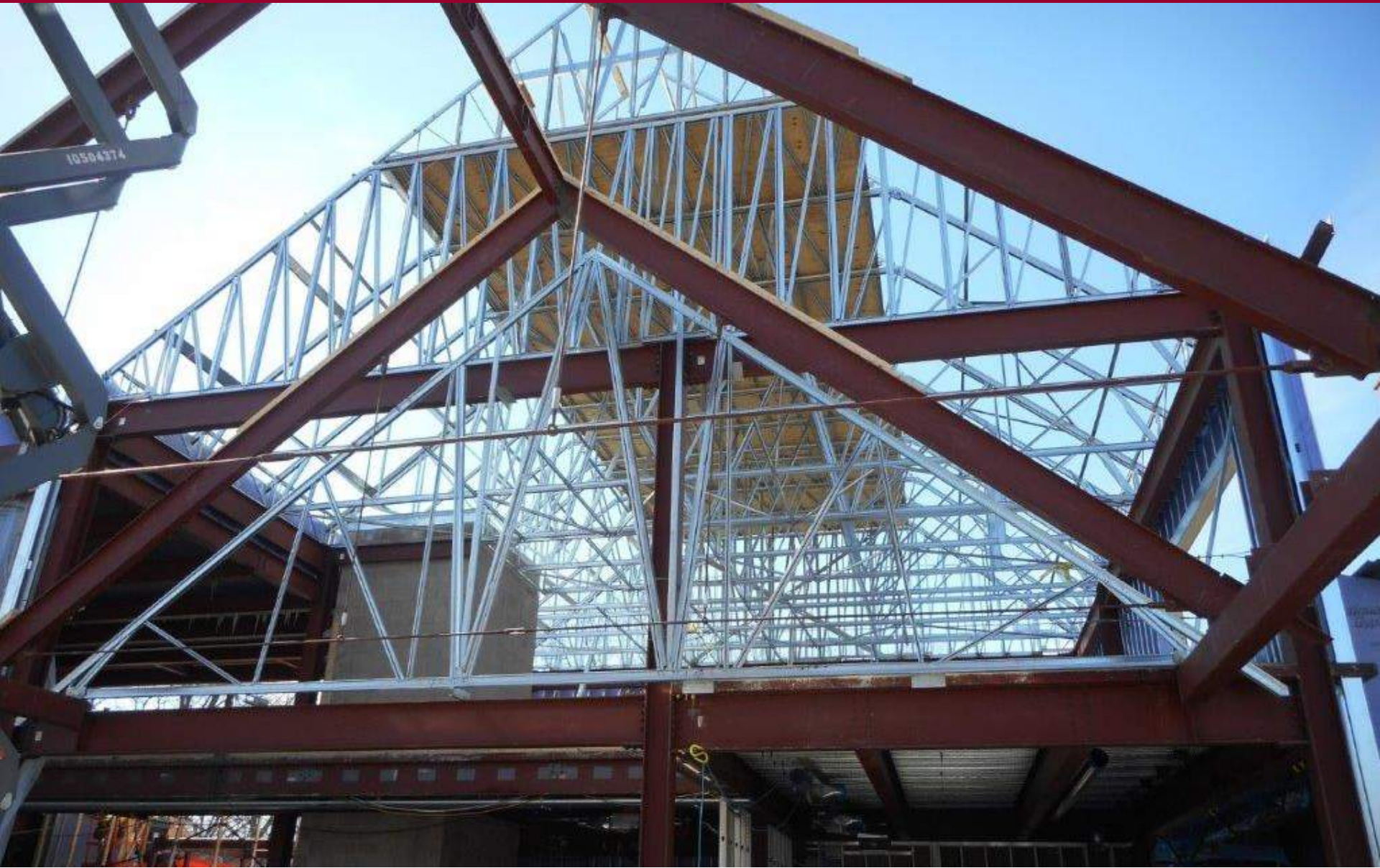
Looking east at Waiting Room 102



Fire box installed



Looking west up from Waiting Room 102 to bridging & roof framing



High steel trusses above 2nd floor offices looking north



2nd floor looking north at Mechanical & Conference Room



Second floor looking south into Mechanical Room 240



Northeast looking southwest at Waiting Room 102



West view of fireplace masonry



Aerial view looking west



Upcoming Highlights

- Wood beams & decking set for Waiting Room 102
- Roof insulation and barrier completed grids 1-13
- All roof blocking completed
- Monumental stairs setting completed
- 1st floor wall grids 1-9 rough ins completed
- 2nd floor MEP overhead underway
- Windows completed grids 1-9
- North area 1st floor framing completed