

April 13, 2018



# GRINNELL COLLEGE

Admission and Financial Aid Building



# Owner and Design Team

## ➤ Grinnell College AFA Project Leadership Team:

- Rick Whitney
- Joe Bagnoli
- Dave Dale
- Jim Powers
- Brad Lindberg
- Christi Baker, critical support

## ➤ ASG Architects

- Ann Powell
- Todd McEntire

## ➤ Structural Engineers

- Rachel Tyler

# McGough Project Team

- Dustin Schwake – Sr. Project Manager
- Matt Schroeder – Project Manager II
- Alex Maass – Assistant Project Manager
- Amy Robinson – Project Coordinator
- Scott Musgrove – Senior Superintendent
- Patrick Woodson – Assistant Superintendent

# Subcontractors

- Architectural Arts
- Baker Electric
- Clark Glass
- DB Acoustics
- Heartland Finishes
- Heartland Window Treatments
- KONE
- Midland Concrete Products
- Ralph N. Smith
- Seedorff Masonry
- Soil-Tek
- Suburban Lumber
- Swanson & Youngdale
- T&K Roofing
- TSF Structures
- US Erectors
- Viking Automatic Sprinkler
- Waldinger
- Walsh Door
- Wes Jarnagin

# Current Highlights

- Monumental stair and railing complete
- Exterior W1 windows completed
- Wall rough ins grids 1-9 completed
- Wood ceiling over Waiting Room 102 - 80% complete
- Stoops poured at 3 entry doors
- 1<sup>st</sup> floor framing - 90% completed
- 2<sup>nd</sup> floor wall framing completed
- Overhead MEP 2<sup>nd</sup> floor - 80% completed
- Air and vapor barrier - 80% completed
- All HM door frames set

Southwest looking northwest





Open Office Room 120 looking north



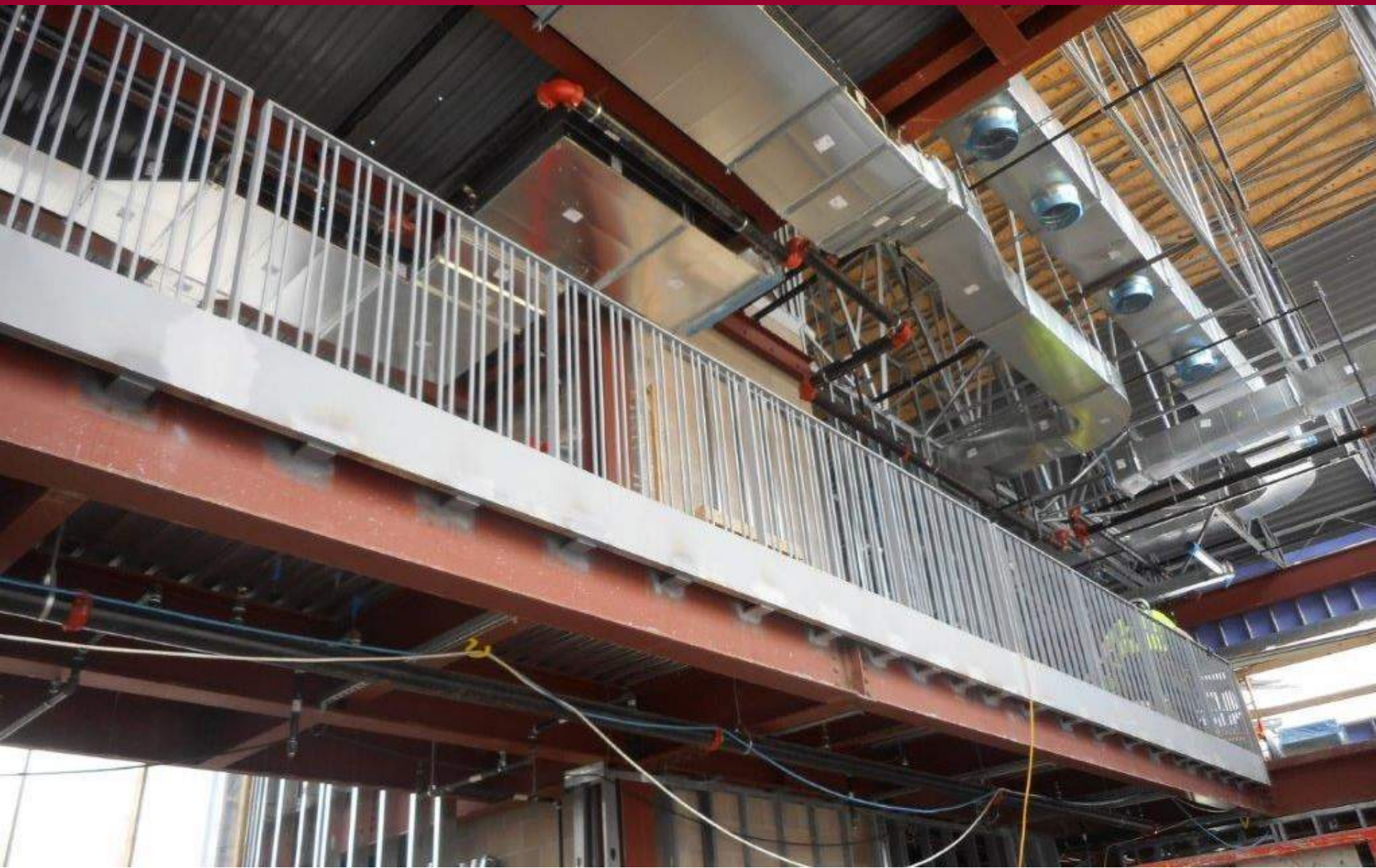


# Monumental stairs at Main Lobby nearing completion



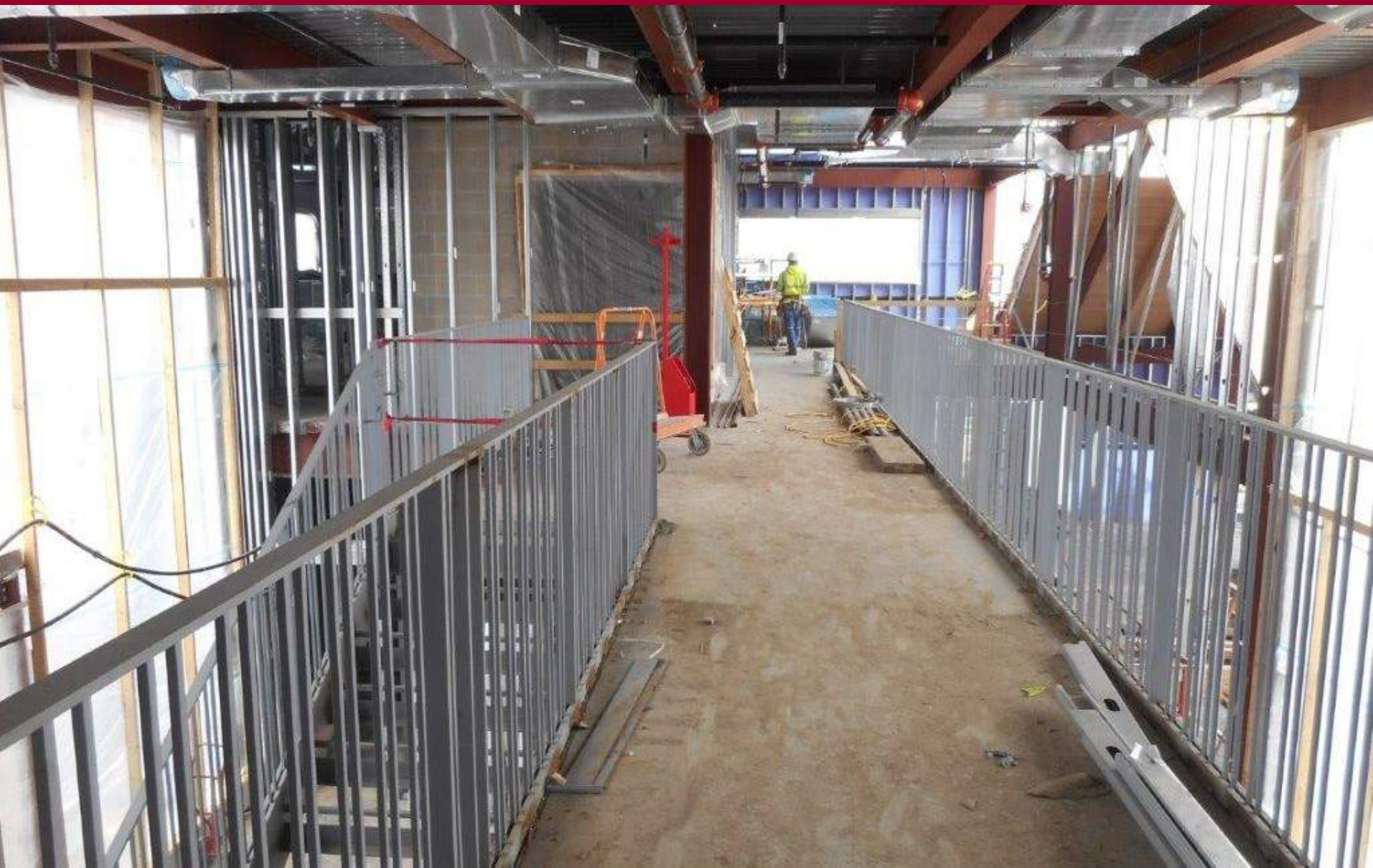


# Bridge railing



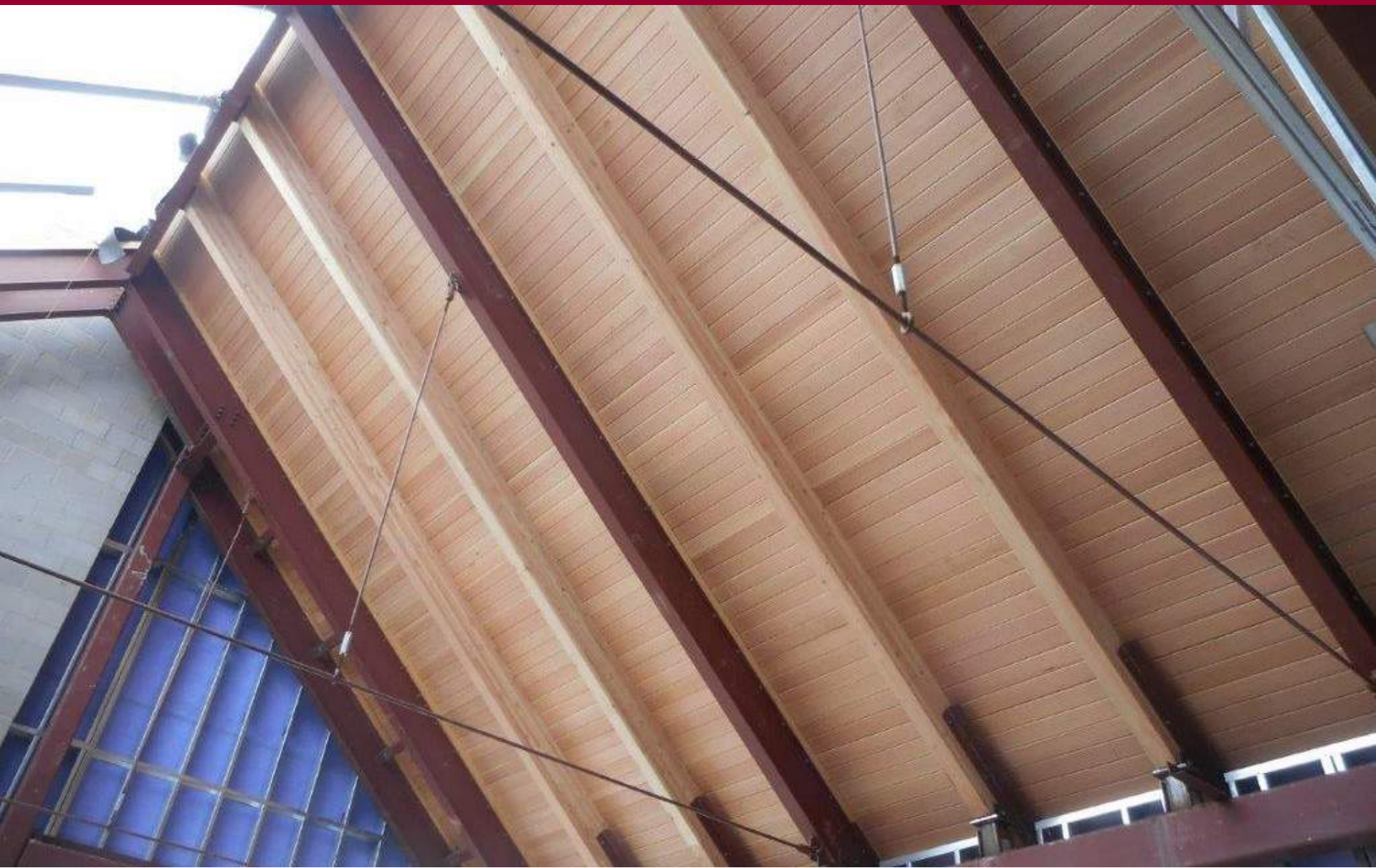


Looking north at bridge railing and elevator





# View of wood ceiling in Waiting Room 102



# Waiting Room 102 fireplace





# View of west elevation and canopy



## West stoop stair 2



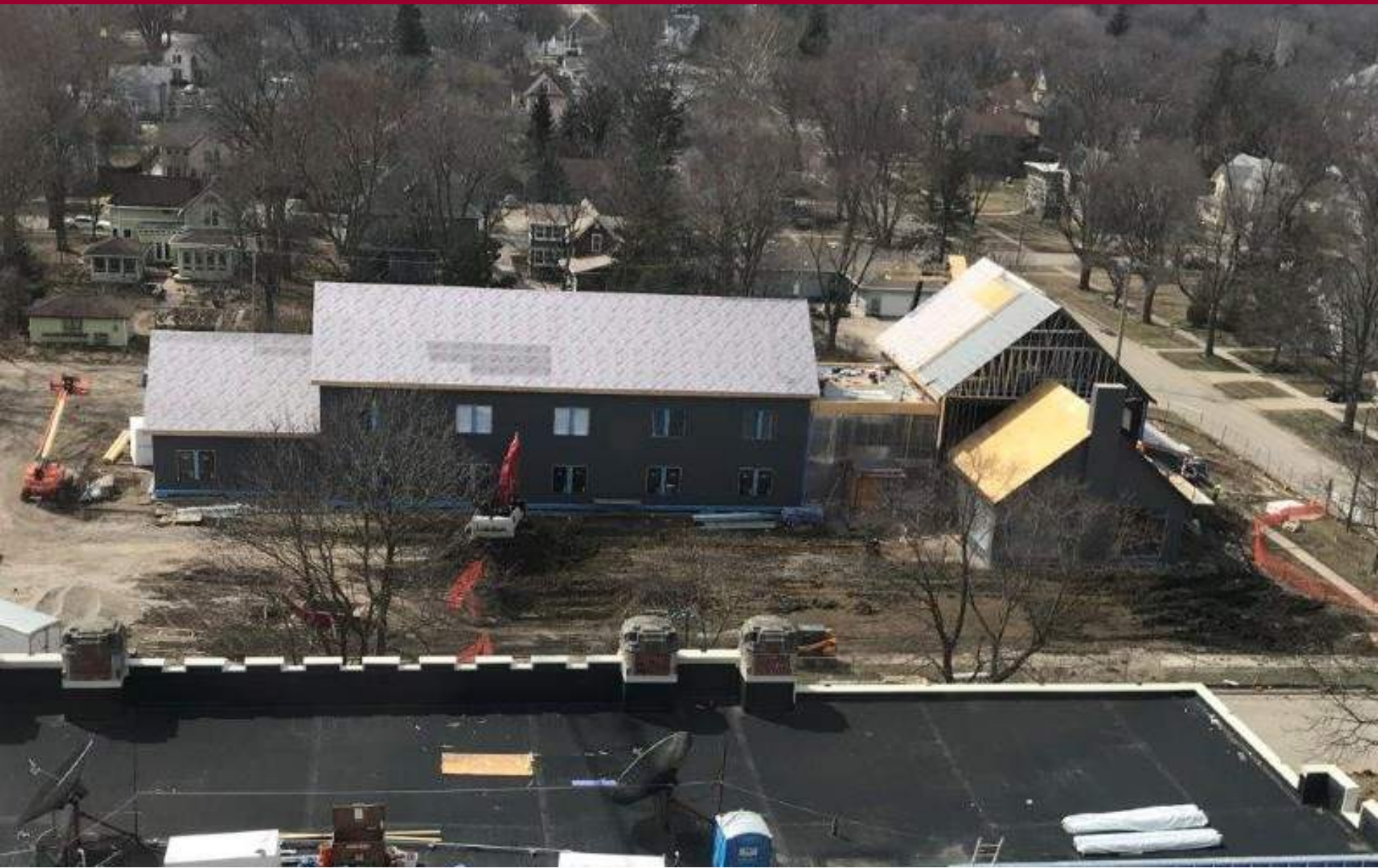


Northeast looking southwest





Aerial view looking west





# Upcoming Highlights

- Complete building enclosure
- 1<sup>st</sup> floor MEP and framing inspection grids 1-9
- Stock drywall grids 1-9
- Marvin Window grids 13-18 install
- Wood fascia complete
- Site HVAC utilities complete
- Start of drywall installation
- Set interior stone fireplace
- Install exterior sill extrusions